



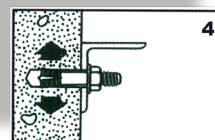
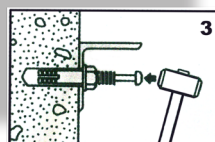
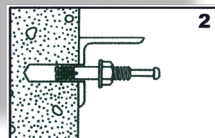
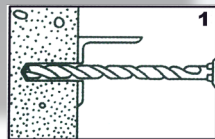
Benner-Nawman, Inc.

3450 Sabin Brown Road • Wickenburg, AZ 85390 • (800) 992-3833 • Fax: (928) 684-7041 • mail@bnproducts.com

C-Type Concrete Anchors



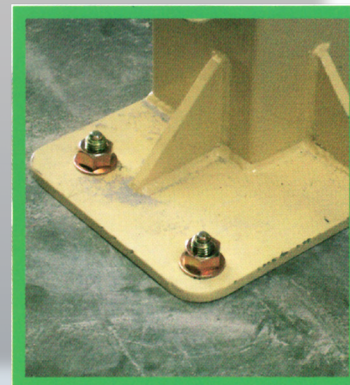
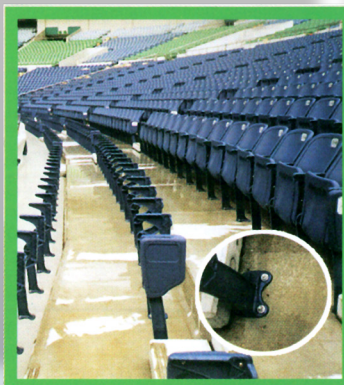
C-Type Anchor



C-TYPE HAMMER DRIVE ANCHOR

- Save time, no special tools required
- Depth of hole is not critical, no depth gauge required.
- Unlike other anchor styles, no torque wrench is required to set, simply drive pin flush with top for positive anchor setting.
- Available in trivalent blue coating for 30% more corrosion resistance.
- High strength steel with greater leg expansion ensures a firmer gripping contact than an anchor made from other metals such as lead.
- Other anchor styles rise when tightening the nut, requiring a longer anchor to provide the same load value.
- Easy to inspect
- Center pin is designed not to break.

This hammer drive anchor features a hardened center pin that is driven through the center to expand the anchor. It includes a nut and washer that can be set to various depths. It is easy to install because the depth of the hole is not critical and no special tool is required, just hammer the pin in and the anchor tensions itself automatically. The anchor is set when the center pin is flush with the top of the bolt making it easy to inspect.



Product Code	Screw Threads		Body Size	Tension Load (lbs.)		Shear Load (lbs.)	Box Qty	Carton Qty	Pallet Qty
	OD	LEN		OD x L	Initial				
C-4070U	1/2"	1"	1/2" x 2-3/4"	3,175	4,255	5,556	30	240	11,520
C-4090U	1/2"	1-3/16"	1/2" x 3-9/16"	3,175	4,255	5,556	30	180	7,560