



**LIGHT & QUIET
12 VOLT**

AIR COMPRESSOR

OWNER'S MANUAL

CALIFORNIA AIR TOOLS

12V1P10S

.6 HP

1.45 CFM @ 40 PSI

.95 CFM @ 90 PSI

1.0 GALLON STEEL TANK



TABLE OF CONTENTS

INTRODUCTION	2
IMPORTANT SAFETY INSTRUCTIONS	3
LOCATIONS OF IMPORTANT LABELS	6
AIR COMPRESSOR COMPONENTS	7
PRE-OPERATION CHECKLIST	8
Package Contents & Assembly	8
Inspect for Damage	9
Save Packaging	9
Compressor Location	9
Electrical Power	10
OPERATING THE AIR COMPRESSOR	10
Introduction	10
Assembly	10
Test Run	11
Daily Operation	11
MAINTENANCE	12
Draining the Air Tank	12
Changing the Air Filter	12
Testing for Leaks	12
Pressure Switch	12
Cleaning	12
STORAGE	12
TROUBLESHOOTING	13
WARRANTY	14
PRODUCT REGISTRATION	16

INTRODUCTION

WARNING

This manual contains important instructions for operating this product. For your safety, and the safety of others, be sure to read this manual thoroughly before operating the product.

Failure to properly follow all the instructions and precautions can cause you and others to be seriously hurt or killed.

Thank you for purchasing a California Air Tools, Inc. Air Compressor.

Please contact us if you have any questions.

Record the model and serial numbers indicated on your air compressor's nameplate:

Model No. _____

Serial No. _____

Date of Purchase: _____

Store/Dealer: _____

How to find a local service center:

Even quality built equipment might need service or repair parts. Contact the California Air Tools Customer Service Department:

Phone: 1-866-409-4581

Online: WWW.CALIFORNIAAIRTOOLS.COM

Please provide the information below:

Model number and Serial number and specifications shown on the Model number/Serial number plate.

Part number or numbers shown in the parts list section of the owner's manual for your air compressor model.

A brief description of the trouble with the air compressor.

Do not return your air compressor for service or parts to the store/dealer where purchased.

IMPORTANT SAFETY INSTRUCTIONS

Safety Messages & Signal Words:

⚠ DANGER

Indicates an immediate hazardous situation which, if not avoided, will result in death or serious injury to the operator or to bystanders.

⚠ WARNING

Indicates a potentially hazardous situation which, if not avoided, could result in death or serious injury to the operator or to bystanders.

⚠ CAUTION

Indicates a potentially hazardous situation which, if not avoided, may result in moderate or minor injury to the operator or to bystanders.

NOTICE

Indicates a situation which, if not avoided, may result in damage to product components or other property.

⚠ DANGER

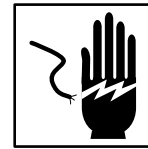


RISK OF CUTTING

Moving parts can cause severe trauma.

Keep hands and feet away from rotating parts, tie up long hair, remove jewelry, and DO NOT wear loose clothing.

⚠ DANGER



SHOCK

There is a danger of electric shock.

Use only undamaged electrical cords.

DO NOT touch bare wires or receptacles.

DO NOT operate air compressor in wet weather or in wet conditions.

DO NOT touch air compressor or cords if hands or feet are wet.

Ensure that all cords are free of damage before connecting to the power supply.

Ensure that you have a sufficient electrical supply for supporting the requirements of the motor.

Before attaching air compressor to a power source, check to make sure that the ON/OFF switch of the air compressor is in the OFF position.

Attach the Positive battery clamp (Red) to the Positive terminal of the battery and the Negative clamp (Black) to the Negative terminal of the battery.

Improper installation of the grounding can result in a risk of electric shock.

This product must be grounded. In the event of an electrical short circuit, grounding reduces the risk of electrical shock by providing an escape wire for the electric current.

This product is equipped with a cord having a grounding wire with an appropriate grounding clamp.

Do not use an adapter with this product.

⚠ WARNING



RISK TO BREATHING

Dust or dust-like particulates caused by power-sanding, sawing, grinding, drilling or any other construction-like activities can contain contaminants that are harmful to breathe.

Always use your air compressor in a well-ventilated and clean area.

Never breathe the air that comes directly out of the air compressor or air hose. This air is not suitable for breathing.

Always wear approved safety equipment. When performing dust-creating activities, securely wear properly-fit face masks or respirators.

If you feel ill from breathing while operating your air compressor, stop and seek medical attention immediately.

⚠ WARNING



FLYING OBJECTS

Flying objects can cause injury to the eyes, head and other parts of the body.

Air-powered equipment and power tools are capable of propelling items (metal chips, fasteners and particulates) at high speed into the air and could result in injury.

Always wear approved head and eye protection.

Never point the air stream at any part of your body, or at another person or animal.

When operating the air compressor, make sure all other people and animals maintain a safe distance.

Do not move the air compressor when the air tank is under pressure.

Never use the air hoses to pull or move the air compressor.

Keep the air compressor on a flat surface.

⚠ WARNING



HOT SURFACE



FIRE

Air compressor surfaces become hot during operation.

DO NOT touch hot surfaces, because they can cause severe burns.

Do not touch the air compressor's cylinder head. During operation, the cooling fins of the cylinder head and delivery pipe become hot.

Allow the air compressor to cool before touching it.

DO NOT place a storage cover on the unit during operation. Only place a cover on the air compressor after it has thoroughly cooled down.

⚠ WARNING



EXPLOSION

Exercise caution when using pressurized air.

To prevent injury and for your general safety, only use high-pressure hoses, fittings and couplings designed for use with air compressors.

Inspect all hoses, fittings and couplings for leaks and wear. When leaks and wear are detected, stop use and replace those items immediately. Do not repair.

Never leave pressurized air in the air tank when performing maintenance.

Never leave the air compressor unattended with the power supply in use and the air hose connected.

⚠ WARNING



EXPLOSION

Improper care could lead to the air tank bursting or exploding.

Drain air tank daily or after each use to prevent moisture buildup in the air tank.

Rust can weaken the air tank and cause leaks or bursting. If rust is detected, replace tank immediately. Do not try to repair the air tank by welding, drilling or modifying it in any other way. These modifications can weaken the air tank and cause a hazardous condition.

If air tank develops a leak, replace the air tank immediately. Never repair, weld or make modifications to the air tank or its attachments.

Never make adjustments to the factory-set pressures.

Never exceed manufacturer's maximum-allowable pressure rating attachments.

Because of extreme heat, do not use plastic pipe or lead tin solder joints for a discharge line.

⚠ WARNING



EXPLOSION



FIRE

Use caution to minimize risk of fire or explosion.

It is normal for the air compressor motor and pressure switch to produce sparks while operating. If sparks come in contact with vapors from gasoline or solvents, they may ignite and cause a fire or explosion.

Abrasive tools such as grinders, drills and other tools are capable of making sparks that can ignite flammable materials.

Always operate the air compressor a safe distance away from flammable items. Use in well-ventilated areas.

Never exceed the maximum rated pressure.

⚠ CAUTION

Use this air compressor with a 12 Volt DC system only.

Do not use this product in or an area where this item can fall or be pulled into water or other liquids.

Do not reach for this product if it has fallen into liquid.

This product should never be left unattended during use.

⚠ CAUTION

THIS EQUIPMENT INCORPORATES PARTS, SUCH AS SNAP SWITCHES, RECEPTACLES AND THE LIKE THAT TEND TO PRODUCE ARCS OR SPARKS, THERE, WHEN LOCATED IN A GARAGE, IT SHOULD BE IN A ROOM OR ENCLOSURE PROVIDED FOR THE PURPOSE, OR SHOULD BE 18 IN (45.7 CM) OR MORE ABOVE THE FLOOR.

LOCATIONS OF IMPORTANT LABELS

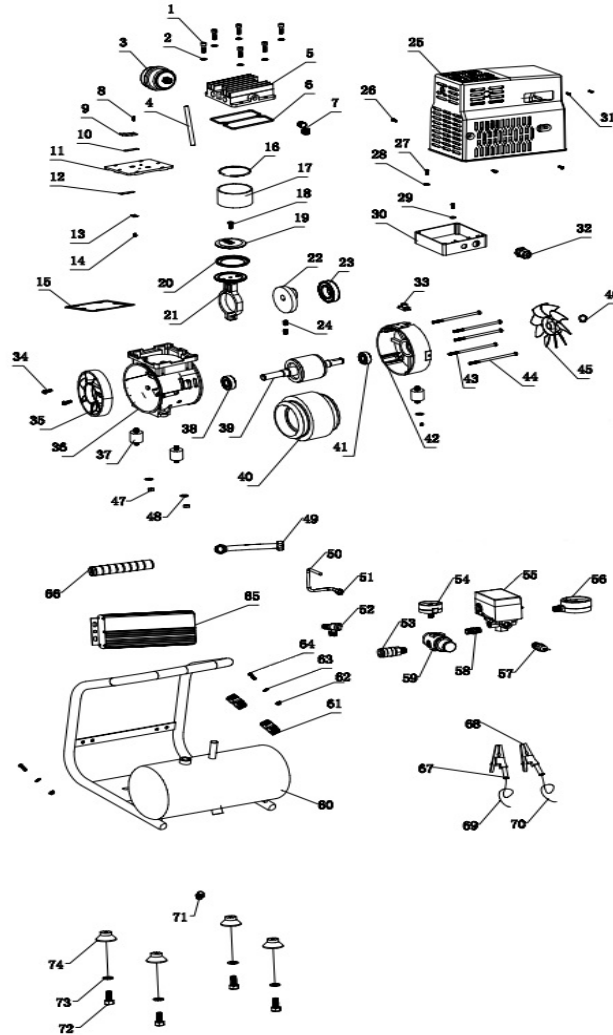
Read these important labels before operating.

These labels provide important safety and maintenance information. These labels should be considered as permanent parts of the air compressor. Should any of these labels become illegible, damaged or removed, please contact California Air Tools Customer Service department at 1-866-409-4581 for replacements.



PRODUCT LABEL																												
A																												
B																												
C																												
D																												
E																												
F																												
G																												
H	<table border="1"> <thead> <tr> <th>▲ WARNING</th> <th>▲ ADVERTENCIA</th> <th>▲ AVERTISSEMENT</th> </tr> </thead> <tbody> <tr> <td>READ MANUAL TO SELECT THE BEST WORKING MODE AND UNDERSTAND THE OPERATING MANUAL BEFORE USING THIS AIR COMPRESSOR.</td> <td>LEER EL MANUAL PARA SELECCIONAR EL MEJOR MODO DE TRABAJO Y ENTENDER EL MANUAL DE OPERACIÓN ANTES DE UTILIZAR EL COMPRESOR DE AIRE.</td> <td>LIRE LE MANUEL POUR SÉLECTIONNER LE MEILLEUR MODE DE TRAVAIL ET COMPRENDRE LE MANUEL D'UTILISATION AVANT D'UTILISER LE COMPRESOR D'AIR.</td> </tr> <tr> <td>WEAR EYE PROTECTION WHENEVER IN CONTACT WITH AIR.</td> <td>USAR PROTECCIÓN PARA LOS OJOS QUE CUMPLAN CON EL ESTANDAR ANSI Z87.1.</td> <td>PORTER DES LUNETTES DE PROTECTION QUI REMPLISSENT LES CRITÈRES DE CONFORMITÉ À LA NORME ANSI Z87.1.</td> </tr> <tr> <td>RISK OF FLAMMABLE: DO NOT DIRECT AIR STREAM AT BODY. DO NOT USE COMPRESSED AIR FOR BREATHING.</td> <td>RIESGO DE CÁRDAS: NO DIRIGIR CORRIENTES DE AIRE HACIA EL CUERPO. NO UTILIZAR AIRE COMPRESIONADO PARA RESPIRAR.</td> <td>RISQUE DE BRÛLURE: NE PAS DIRIGER LE FLUX D'AIR VERS LE CORPS. NE PAS RESPIRER AIR COMPRIMÉ.</td> </tr> <tr> <td>RISK OF FIRE OR EXPLOSION: DO NOT SMOKE OR USE OPEN FLAMES OR FLAMMABLE LIQUIDS IN A CLOSED AREA. NEVER SMOKE WHILE USING. DO NOT SMOKER WHILE SPRAYING OR SPRAYING IN A CLOSED AREA OR IN A PLACE OF RESIDENCE. HOLDING TIMES: SEE SPRAY CAN USE INSTRUCTIONS FOR HOLDING TIMES. ALWAYS KEEP THE COMPRESSOR AT LEAST 10 FEET AWAY FROM FLAMMABLE LIQUIDS.</td> <td>RIESGO DE INCENDIO O EXPLOSIÓN: NO FUMAR NI UTILIZAR VELAS O FUEGOS ENCENDIDOS EN UN ESPACIO CERRADO. NUNCA FUMAR NI UTILIZAR VELAS O FUEGOS ENCENDIDOS EN UN ESPACIO CERRADO NI EN UN LUGAR DE RESIDENCIA. TIEMPOS DE MANTENIMIENTO: VER LAS INSTRUCCIONES DE LA BOMBILLA PARA LOS TIEMPOS DE MANTENIMIENTO. SIEMPRE MANTENER EL COMPRESOR A MÍNIMO 10 PIES DE DISTANCIA DE LOS LÍQUIDOS INFLAMMABLES.</td> <td>RISQUE DE INCENDIE OU D'EXPLOSION: NE PAS FUMER NI UTILISER DES CHAUFFES-BOUILLIÈRES, DES ALLUMETTES OU DES FUMÉES EN UN ESPACE FERMÉ. NE PAS FUMER NI UTILISER DES CHAUFFES-BOUILLIÈRES, DES ALLUMETTES OU DES FUMÉES EN UN ESPACE FERMÉ NI EN UN LIEU D'HABITATION. DURÉES DE MANTENEMENT: VOIR LES INSTRUCTIONS DE LA BOULLE POUR LES DURÉES DE MANTENEMENT. TOUJOURS GARDER LE COMPRESSEUR À AU MOINS 10 PÈS D'UN LIQUIDE INFLAMMABLE.</td> </tr> <tr> <td>RISK OF BURNING: DO NOT ADJUST REGULATOR TO RESULT IN THE OUTPUT PRESSURE EXCEEDING THE MAXIMUM PRESSURE OF ATTACHMENTS TO THE TOOL STRAIN.</td> <td>RIESGO DE QUEMADURAS: NO AJUSTAR EL REGULADOR PARA QUE LA PRESIÓN DE SALIDA SUPERE LA PRESIÓN MÁXIMA ADMISIDA POR EL EQUIPO CONECTADO A LA HERRAMIENTA.</td> <td>RISQUE DE BRÛLURE: NE PAS AJUSTER LE RÉGULATEUR POUR QUE LA PRÉSSION DE SORTIE DÉPASSE LA PRÉSSION MAXIMALE ADMISE PAR LES ACCESSOIRES RACCORDÉS À L'INSTRUMENT.</td> </tr> <tr> <td>TO REDUCE THE RISK OF ELECTRICAL SHOCK, DO NOT EXPOSE TO RAIN, STORE Indoors.</td> <td>PARA REDUCIR EL RIESGO DE CHOQUE ELÉCTRICO NO EXPOSER AL LUGAR ALUJANADO.</td> <td>POUR RÉDUIRE LE RISQUE DE DÉCHARGE ÉLECTRIQUE, NE PAS EXPOSER L'APPAREIL À LA PLUIE. ENTREPOSER L'APPAREIL À L'INTÉRIEUR.</td> </tr> <tr> <td>RISK OF ELECTRICAL SHOCK: HOLD ELECTRICAL CONNECTIONS WITH PROPER SOURCE BEFORE SERVICING COMPRESSOR. ALWAYS DISCONNECT POWER SUPPLY TO THE TOOL.</td> <td>RIESGO DE CHOQUE ELÉCTRICO: MANTENER LAS CONEXIONES ELÉCTRICAS CON LA FUENTE CORRECTA ANTES DE SERVICIAR EL COMPRESOR. SIEMPRE DESCONECTAR LA FUENTE DE ALIMENTACIÓN DEL EQUIPO.</td> <td>RISQUE DE ÉLECTROCUTION: TENIR CORRECTEMENT LES BRANCHES ÉLECTRIQUES AVANT D'ENTREPRENDRE LE TRAVAIL DE RÉPARATION DU COMPRESSEUR D'AIR. TOUJOURS DÉCONNECTER LA SOURCE D'ALIMENTATION À L'AVANT.</td> </tr> <tr> <td>THIS EQUIPMENT INCORPORATES PARTS, SUCH AS SNAP FITTINGS, INTERLOCKED AND THE LIKE THAT TEND TO PRODUCE AIDS OR SPALLS. THESE WHEN OCCURRING IN A GARAGE, POOL OR OTHER ENCLOSED SPACE SHOULD BE REMOVED OR SHOULD BE IN A PLACE TO BE REMOVED FROM THE FLOOR.</td> <td>EL PRESENTE EQUIPO INCORPORA PARTES COMO ENTORNOQUES AUTOMÁTICOS, BLOQUEOS Y SIMILARES QUE TIENDEN A PRODUCIR AYUDAS O DESGASTOS. ESTAS CUANDO OCURREN EN UN GARAJE, PISCINA U OTRO ESPACIO ENCLAUSTRADO DEBEN SER REMOVIDAS O DEBERÍAN SER REMOVIDAS DEL PISO.</td> <td>CET ÉQUIPEMENT COMPREND DES PIÈCES TELLES QUE DES ENTORNOQUES OU DES BLOQUEOS AUTOMATIQUES ET D'AUTRES COMPOSANTS SIMILAIRES QUI PEUVENT PRODUIRE DES AIDES OU DES DÉGÂTS. CES ÉLÉMENTS DOIVENT ÊTRE ENLEVÉS QUAND ILS SE PRODUISENT DANS UN GARAGE, UNE PISCINE, UN AUTRE ESPACE ENCLAUSTRÉ OU DOIVENT ÊTRE ENLEVÉS DU SOL.</td> </tr> </tbody> </table>	▲ WARNING	▲ ADVERTENCIA	▲ AVERTISSEMENT	READ MANUAL TO SELECT THE BEST WORKING MODE AND UNDERSTAND THE OPERATING MANUAL BEFORE USING THIS AIR COMPRESSOR.	LEER EL MANUAL PARA SELECCIONAR EL MEJOR MODO DE TRABAJO Y ENTENDER EL MANUAL DE OPERACIÓN ANTES DE UTILIZAR EL COMPRESOR DE AIRE.	LIRE LE MANUEL POUR SÉLECTIONNER LE MEILLEUR MODE DE TRAVAIL ET COMPRENDRE LE MANUEL D'UTILISATION AVANT D'UTILISER LE COMPRESOR D'AIR.	WEAR EYE PROTECTION WHENEVER IN CONTACT WITH AIR.	USAR PROTECCIÓN PARA LOS OJOS QUE CUMPLAN CON EL ESTANDAR ANSI Z87.1.	PORTER DES LUNETTES DE PROTECTION QUI REMPLISSENT LES CRITÈRES DE CONFORMITÉ À LA NORME ANSI Z87.1.	RISK OF FLAMMABLE: DO NOT DIRECT AIR STREAM AT BODY. DO NOT USE COMPRESSED AIR FOR BREATHING.	RIESGO DE CÁRDAS: NO DIRIGIR CORRIENTES DE AIRE HACIA EL CUERPO. NO UTILIZAR AIRE COMPRESIONADO PARA RESPIRAR.	RISQUE DE BRÛLURE: NE PAS DIRIGER LE FLUX D'AIR VERS LE CORPS. NE PAS RESPIRER AIR COMPRIMÉ.	RISK OF FIRE OR EXPLOSION: DO NOT SMOKE OR USE OPEN FLAMES OR FLAMMABLE LIQUIDS IN A CLOSED AREA. NEVER SMOKE WHILE USING. DO NOT SMOKER WHILE SPRAYING OR SPRAYING IN A CLOSED AREA OR IN A PLACE OF RESIDENCE. HOLDING TIMES: SEE SPRAY CAN USE INSTRUCTIONS FOR HOLDING TIMES. ALWAYS KEEP THE COMPRESSOR AT LEAST 10 FEET AWAY FROM FLAMMABLE LIQUIDS.	RIESGO DE INCENDIO O EXPLOSIÓN: NO FUMAR NI UTILIZAR VELAS O FUEGOS ENCENDIDOS EN UN ESPACIO CERRADO. NUNCA FUMAR NI UTILIZAR VELAS O FUEGOS ENCENDIDOS EN UN ESPACIO CERRADO NI EN UN LUGAR DE RESIDENCIA. TIEMPOS DE MANTENIMIENTO: VER LAS INSTRUCCIONES DE LA BOMBILLA PARA LOS TIEMPOS DE MANTENIMIENTO. SIEMPRE MANTENER EL COMPRESOR A MÍNIMO 10 PIES DE DISTANCIA DE LOS LÍQUIDOS INFLAMMABLES.	RISQUE DE INCENDIE OU D'EXPLOSION: NE PAS FUMER NI UTILISER DES CHAUFFES-BOUILLIÈRES, DES ALLUMETTES OU DES FUMÉES EN UN ESPACE FERMÉ. NE PAS FUMER NI UTILISER DES CHAUFFES-BOUILLIÈRES, DES ALLUMETTES OU DES FUMÉES EN UN ESPACE FERMÉ NI EN UN LIEU D'HABITATION. DURÉES DE MANTENEMENT: VOIR LES INSTRUCTIONS DE LA BOULLE POUR LES DURÉES DE MANTENEMENT. TOUJOURS GARDER LE COMPRESSEUR À AU MOINS 10 PÈS D'UN LIQUIDE INFLAMMABLE.	RISK OF BURNING: DO NOT ADJUST REGULATOR TO RESULT IN THE OUTPUT PRESSURE EXCEEDING THE MAXIMUM PRESSURE OF ATTACHMENTS TO THE TOOL STRAIN.	RIESGO DE QUEMADURAS: NO AJUSTAR EL REGULADOR PARA QUE LA PRESIÓN DE SALIDA SUPERE LA PRESIÓN MÁXIMA ADMISIDA POR EL EQUIPO CONECTADO A LA HERRAMIENTA.	RISQUE DE BRÛLURE: NE PAS AJUSTER LE RÉGULATEUR POUR QUE LA PRÉSSION DE SORTIE DÉPASSE LA PRÉSSION MAXIMALE ADMISE PAR LES ACCESSOIRES RACCORDÉS À L'INSTRUMENT.	TO REDUCE THE RISK OF ELECTRICAL SHOCK, DO NOT EXPOSE TO RAIN, STORE Indoors.	PARA REDUCIR EL RIESGO DE CHOQUE ELÉCTRICO NO EXPOSER AL LUGAR ALUJANADO.	POUR RÉDUIRE LE RISQUE DE DÉCHARGE ÉLECTRIQUE, NE PAS EXPOSER L'APPAREIL À LA PLUIE. ENTREPOSER L'APPAREIL À L'INTÉRIEUR.	RISK OF ELECTRICAL SHOCK: HOLD ELECTRICAL CONNECTIONS WITH PROPER SOURCE BEFORE SERVICING COMPRESSOR. ALWAYS DISCONNECT POWER SUPPLY TO THE TOOL.	RIESGO DE CHOQUE ELÉCTRICO: MANTENER LAS CONEXIONES ELÉCTRICAS CON LA FUENTE CORRECTA ANTES DE SERVICIAR EL COMPRESOR. SIEMPRE DESCONECTAR LA FUENTE DE ALIMENTACIÓN DEL EQUIPO.	RISQUE DE ÉLECTROCUTION: TENIR CORRECTEMENT LES BRANCHES ÉLECTRIQUES AVANT D'ENTREPRENDRE LE TRAVAIL DE RÉPARATION DU COMPRESSEUR D'AIR. TOUJOURS DÉCONNECTER LA SOURCE D'ALIMENTATION À L'AVANT.	THIS EQUIPMENT INCORPORATES PARTS, SUCH AS SNAP FITTINGS, INTERLOCKED AND THE LIKE THAT TEND TO PRODUCE AIDS OR SPALLS. THESE WHEN OCCURRING IN A GARAGE, POOL OR OTHER ENCLOSED SPACE SHOULD BE REMOVED OR SHOULD BE IN A PLACE TO BE REMOVED FROM THE FLOOR.	EL PRESENTE EQUIPO INCORPORA PARTES COMO ENTORNOQUES AUTOMÁTICOS, BLOQUEOS Y SIMILARES QUE TIENDEN A PRODUCIR AYUDAS O DESGASTOS. ESTAS CUANDO OCURREN EN UN GARAJE, PISCINA U OTRO ESPACIO ENCLAUSTRADO DEBEN SER REMOVIDAS O DEBERÍAN SER REMOVIDAS DEL PISO.	CET ÉQUIPEMENT COMPREND DES PIÈCES TELLES QUE DES ENTORNOQUES OU DES BLOQUEOS AUTOMATIQUES ET D'AUTRES COMPOSANTS SIMILAIRES QUI PEUVENT PRODUIRE DES AIDES OU DES DÉGÂTS. CES ÉLÉMENTS DOIVENT ÊTRE ENLEVÉS QUAND ILS SE PRODUISENT DANS UN GARAGE, UNE PISCINE, UN AUTRE ESPACE ENCLAUSTRÉ OU DOIVENT ÊTRE ENLEVÉS DU SOL.
▲ WARNING	▲ ADVERTENCIA	▲ AVERTISSEMENT																										
READ MANUAL TO SELECT THE BEST WORKING MODE AND UNDERSTAND THE OPERATING MANUAL BEFORE USING THIS AIR COMPRESSOR.	LEER EL MANUAL PARA SELECCIONAR EL MEJOR MODO DE TRABAJO Y ENTENDER EL MANUAL DE OPERACIÓN ANTES DE UTILIZAR EL COMPRESOR DE AIRE.	LIRE LE MANUEL POUR SÉLECTIONNER LE MEILLEUR MODE DE TRAVAIL ET COMPRENDRE LE MANUEL D'UTILISATION AVANT D'UTILISER LE COMPRESOR D'AIR.																										
WEAR EYE PROTECTION WHENEVER IN CONTACT WITH AIR.	USAR PROTECCIÓN PARA LOS OJOS QUE CUMPLAN CON EL ESTANDAR ANSI Z87.1.	PORTER DES LUNETTES DE PROTECTION QUI REMPLISSENT LES CRITÈRES DE CONFORMITÉ À LA NORME ANSI Z87.1.																										
RISK OF FLAMMABLE: DO NOT DIRECT AIR STREAM AT BODY. DO NOT USE COMPRESSED AIR FOR BREATHING.	RIESGO DE CÁRDAS: NO DIRIGIR CORRIENTES DE AIRE HACIA EL CUERPO. NO UTILIZAR AIRE COMPRESIONADO PARA RESPIRAR.	RISQUE DE BRÛLURE: NE PAS DIRIGER LE FLUX D'AIR VERS LE CORPS. NE PAS RESPIRER AIR COMPRIMÉ.																										
RISK OF FIRE OR EXPLOSION: DO NOT SMOKE OR USE OPEN FLAMES OR FLAMMABLE LIQUIDS IN A CLOSED AREA. NEVER SMOKE WHILE USING. DO NOT SMOKER WHILE SPRAYING OR SPRAYING IN A CLOSED AREA OR IN A PLACE OF RESIDENCE. HOLDING TIMES: SEE SPRAY CAN USE INSTRUCTIONS FOR HOLDING TIMES. ALWAYS KEEP THE COMPRESSOR AT LEAST 10 FEET AWAY FROM FLAMMABLE LIQUIDS.	RIESGO DE INCENDIO O EXPLOSIÓN: NO FUMAR NI UTILIZAR VELAS O FUEGOS ENCENDIDOS EN UN ESPACIO CERRADO. NUNCA FUMAR NI UTILIZAR VELAS O FUEGOS ENCENDIDOS EN UN ESPACIO CERRADO NI EN UN LUGAR DE RESIDENCIA. TIEMPOS DE MANTENIMIENTO: VER LAS INSTRUCCIONES DE LA BOMBILLA PARA LOS TIEMPOS DE MANTENIMIENTO. SIEMPRE MANTENER EL COMPRESOR A MÍNIMO 10 PIES DE DISTANCIA DE LOS LÍQUIDOS INFLAMMABLES.	RISQUE DE INCENDIE OU D'EXPLOSION: NE PAS FUMER NI UTILISER DES CHAUFFES-BOUILLIÈRES, DES ALLUMETTES OU DES FUMÉES EN UN ESPACE FERMÉ. NE PAS FUMER NI UTILISER DES CHAUFFES-BOUILLIÈRES, DES ALLUMETTES OU DES FUMÉES EN UN ESPACE FERMÉ NI EN UN LIEU D'HABITATION. DURÉES DE MANTENEMENT: VOIR LES INSTRUCTIONS DE LA BOULLE POUR LES DURÉES DE MANTENEMENT. TOUJOURS GARDER LE COMPRESSEUR À AU MOINS 10 PÈS D'UN LIQUIDE INFLAMMABLE.																										
RISK OF BURNING: DO NOT ADJUST REGULATOR TO RESULT IN THE OUTPUT PRESSURE EXCEEDING THE MAXIMUM PRESSURE OF ATTACHMENTS TO THE TOOL STRAIN.	RIESGO DE QUEMADURAS: NO AJUSTAR EL REGULADOR PARA QUE LA PRESIÓN DE SALIDA SUPERE LA PRESIÓN MÁXIMA ADMISIDA POR EL EQUIPO CONECTADO A LA HERRAMIENTA.	RISQUE DE BRÛLURE: NE PAS AJUSTER LE RÉGULATEUR POUR QUE LA PRÉSSION DE SORTIE DÉPASSE LA PRÉSSION MAXIMALE ADMISE PAR LES ACCESSOIRES RACCORDÉS À L'INSTRUMENT.																										
TO REDUCE THE RISK OF ELECTRICAL SHOCK, DO NOT EXPOSE TO RAIN, STORE Indoors.	PARA REDUCIR EL RIESGO DE CHOQUE ELÉCTRICO NO EXPOSER AL LUGAR ALUJANADO.	POUR RÉDUIRE LE RISQUE DE DÉCHARGE ÉLECTRIQUE, NE PAS EXPOSER L'APPAREIL À LA PLUIE. ENTREPOSER L'APPAREIL À L'INTÉRIEUR.																										
RISK OF ELECTRICAL SHOCK: HOLD ELECTRICAL CONNECTIONS WITH PROPER SOURCE BEFORE SERVICING COMPRESSOR. ALWAYS DISCONNECT POWER SUPPLY TO THE TOOL.	RIESGO DE CHOQUE ELÉCTRICO: MANTENER LAS CONEXIONES ELÉCTRICAS CON LA FUENTE CORRECTA ANTES DE SERVICIAR EL COMPRESOR. SIEMPRE DESCONECTAR LA FUENTE DE ALIMENTACIÓN DEL EQUIPO.	RISQUE DE ÉLECTROCUTION: TENIR CORRECTEMENT LES BRANCHES ÉLECTRIQUES AVANT D'ENTREPRENDRE LE TRAVAIL DE RÉPARATION DU COMPRESSEUR D'AIR. TOUJOURS DÉCONNECTER LA SOURCE D'ALIMENTATION À L'AVANT.																										
THIS EQUIPMENT INCORPORATES PARTS, SUCH AS SNAP FITTINGS, INTERLOCKED AND THE LIKE THAT TEND TO PRODUCE AIDS OR SPALLS. THESE WHEN OCCURRING IN A GARAGE, POOL OR OTHER ENCLOSED SPACE SHOULD BE REMOVED OR SHOULD BE IN A PLACE TO BE REMOVED FROM THE FLOOR.	EL PRESENTE EQUIPO INCORPORA PARTES COMO ENTORNOQUES AUTOMÁTICOS, BLOQUEOS Y SIMILARES QUE TIENDEN A PRODUCIR AYUDAS O DESGASTOS. ESTAS CUANDO OCURREN EN UN GARAJE, PISCINA U OTRO ESPACIO ENCLAUSTRADO DEBEN SER REMOVIDAS O DEBERÍAN SER REMOVIDAS DEL PISO.	CET ÉQUIPEMENT COMPREND DES PIÈCES TELLES QUE DES ENTORNOQUES OU DES BLOQUEOS AUTOMATIQUES ET D'AUTRES COMPOSANTS SIMILAIRES QUI PEUVENT PRODUIRE DES AIDES OU DES DÉGÂTS. CES ÉLÉMENTS DOIVENT ÊTRE ENLEVÉS QUAND ILS SE PRODUISENT DANS UN GARAGE, UNE PISCINE, UN AUTRE ESPACE ENCLAUSTRÉ OU DOIVENT ÊTRE ENLEVÉS DU SOL.																										

AIR COMPRESSOR



NO.	Part	NO.	Part	NO.	Part	NO.	Part
1	Head Screw	21	Connecting Rod	41	Bearing	61	Connector
2	Head Washer	22	Crank	42	Left Housing	62	Nut
3	Air Filter	23	Bearing	43	Bolt	63	Washer
4	Air Filter Hose	24	Opressor Allen	44	Bolt	64	Bolt
5	Head	25	Motor Plastic Cover	45	Fan	65	Electronic Control
6	Cylinder Head Obturating Ring	26	Screw	46	Fan O-Ring	66	Handle
7	Elbow	27	Screw	47	Nut	67	Plastic Washer
8	Limited Block Screw	28	Washer	48	Washer	68	Clamp
9	Limited Block	29	Washer	49	Exhaust Hose	69	Clamp Wire
10	Gassing Valve Plate	30	Adjustment Stent	50	Uploading Pipe	70	Clamp Wire
11	Valve Plate	31	Screw	51	Uploading Pipe Nut	71	Drain Valve
12	Air Inflow Valve Plate	32	Reducer	52	Check Valve	72	Cushion Foot Bolt
13	Metal Strengthen Sheet	33	External Current Protector	53	Quick Connector	73	Cushion Foot Washer
14	Screw	34	Fan Cover Bolt	54	Pressure Gauge	74	Cushion Foot
15	Housing Ring	35	Fan Cover	55	Pressure Switch	75	
16	Cylinder Obturating Ring	36	Right Housing	56	Pressure Gauge	76	
17	Cylinder Head	37	Shock Strut	57	Safety Valve	77	
18	Pressure Plate Screw	38	Bearing	58	Connector	78	
19	Pressure Plate	39	Rotor	59	Regulator	79	
20	Piston Ring	40	Stator	60	1.0 Gallon Steel Tank	80	

PRE-OPERATION CHECKLIST

Package Contents & Assembly

Model: 12V1P10S

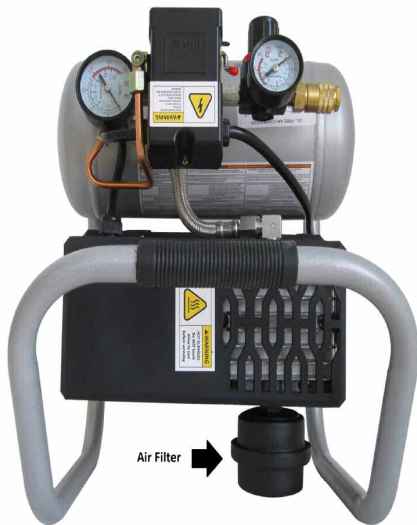
Package contents:

- Air Compressor
- Owner's Manual
- Air Filter

Assembly:

Attaching the air filter to the air compressor.

Screw (hand tight) the air filter on to the back right side of the motor.



Attaching the air hose to the air compressor.

Attach a 1/4" Universal or Industrial Male Quick Connector to an air hose.

Push the 1/4" Universal or Industrial Male Quick Connector (on the air hose) into the 1/4" Universal or Industrial Female Quick Connector attached to the air compressor.

Attaching the power cord to the battery

Before attaching the air compressor battery clamps to the battery check to make sure that the ON/OFF switch on the air compressor is in the OFF position.

Attach the Positive battery clamp (Red) to the Positive Terminal of the battery and the Negative battery clamp (Black) to the Negative Terminal of the battery.

Keep all power cords and air hose clear of all moving parts and objects for safety.

⚠ CAUTION

Use this air compressor with a 12 Volt DC system only.

Keep all power cords and air hoses clear of all moving parts.

Moving parts can attach to the cords or hoses causing severe trauma.

This product should never be left unattended during use.

Inspect for Damage

Before using the air compressor, make sure the air tank is not damaged, inspect all parts for damage, and check that all pipes are firmly connected.

Do not use the air compressor if any damage is found. If damaged, have an authorized service center inspect and test the air compressor to ensure that is working properly.

Save Packaging

IMPORTANT: Save all outside packaging in case you ever need to return the product for service or repair.

Compressor Location

Use on Flat Surface


For proper operation, the air compressor must be placed on a flat surface with an incline no greater than 15 degrees.


Maintain a Clear Area

It is very important that the air compressor is positioned so that there is adequate airflow around the machine. There must be at least 2 feet of obstacle-free space surrounding and above the air compressor.

Keep all power cords and air hoses clear of all moving parts and objects.

⚠ WARNING


EXPLOSION


FIRE

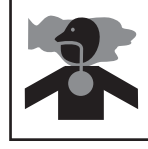
Use caution to minimize risk of fire or explosion. It is normal for the air compressor motor and pressure switch to produce sparks while operating. If sparks come in contact with vapors from gasoline or solvents, they may ignite and cause a fire or explosion.

Abrasive tools such as grinders, drills and other tools are capable of making sparks that can ignite flammable materials.

Always operate the air compressor a safe distance away from flammable items. Use in well-ventilated areas.

Never exceed the maximum rated pressure.

⚠ WARNING


RISK TO BREATHING

Dust or dust-like particulates caused by power-sanding, sawing, grinding, drilling or any other construction-like activities can contain contaminants that are harmful to breathe.

Always use your air compressor in a well-ventilated and clean area.

Never breathe the air that comes directly out of the air compressor or air hose. This air is not suitable for breathing.

Always wear approved safety equipment. When performing dust-creating activities, securely wear properly-fit face masks or respirators.

If you feel ill from breathing while operating your air compressor, stop and seek medical attention immediately.

Use in Areas with Clean Air

For proper operation and to maximize the longevity of the air compressor, it is very important that the air drawn into the air compressor is clean. The air compressor should not be used in areas where dust or particulates are in the air. This will damage the motor and impair proper operation.

IMPORTANT: Always use the air filter, properly installed.

Electrical Power

Electrical Power Requirements

⚠ DANGER



SHOCK

There is a danger of electric shock.

Use only undamaged electrical cords.

DO NOT touch bare wires or receptacles.

DO NOT operate air compressor in wet weather or in wet conditions.

DO NOT touch air compressor or cords if hands or feet are wet.

Ensure that all cords are free of damage before connecting to the power supply.

Ensure that you have a sufficient electrical supply for supporting the requirements of the motor.

Before attaching air compressor to a power source, check to make sure that the ON/OFF switch of the air compressor is in the OFF position.

Attach the Positive battery clamp (Red) to the Positive terminal of the battery and the Negative clamp (Black) to the Negative terminal of the battery.

Improper installation of the grounding can result in a risk of electric shock.

This product must be grounded. In the event of an electrical short circuit, grounding reduces the risk of electrical shock by providing an escape wire for the electric current.

This product is equipped with a cord having a grounding wire with an appropriate grounding clamp.

Do not use an adapter with this product.

Before using the air compressor, refer to the serial label for voltage and amperage requirements. Make sure you have a sufficient electrical supply for supporting the motor's requirements.

Use a dedicated circuit for the best results.

Low voltage and/or an overload circuit can cause the motor's overload protection system circuit breaker to trip.

Electrical Cords

⚠ CAUTION

Use this air compressor with a 12 Volt DC system only.

Do not use this product in or an area where this item can fall or be pulled into water or other liquids.

Do not reach for this product if it has fallen into liquid.

This product should never be left unattended during use.

Inspect all electrical extension cords to ensure that they are free of damage.

Attach the Positive battery clamp (Red) to the Positive Terminal of the battery and the Negative battery clamp (Black) to the Negative Terminal of the battery.

OPERATING THE AIR COMPRESSOR

⚠ WARNING

This manual contains important instructions for operating this product. For your safety, and the safety of others, be sure to read this manual thoroughly before operating the product.

Failure to properly follow all the instructions and precautions can cause you and others to be seriously hurt or killed.

Save this manual for future reference.

Introduction

This air compressor features a compact structure, stable performance, a high airflow rate, easy operation and maintenance.

Assembly

1. Connect your air supply hose to a 1/4" male universal or industrial quick connect coupler. Connect the male quick connect coupler to the female quick connect coupler located on the air compressor
2. Make sure the drainage valve is off and that the pressure switch is in the OFF position.
3. Ensure that the power supply you are going to use is operating normally.
4. Attach air filter to the motor.

Test Run

1. Turn the air compressor power switch to the OFF position.

The vehicle's engine must be running when using the air compressor.

Attach the Positive battery clamp (Red) to the Positive Terminal of the battery and the Negative clamp (Black) to the Negative Terminal on the battery.

Turn the air compressor to the ON position.

The pressure gauge will slowly rise as pressure increases inside the air tank. When the gauge reading reaches 115 PSI - 120 PSI, the pressure switch will automatically turn the power off.

This indicates the compressor is working normally.

2. When finished.

Turn the air compressor power switch to the Off position.

First remove the Red (Positive) battery clamp and then the Black (Negative) battery clamp from the battery.

Release the air in the tank by opening the drain valve.

At this point proceed to the next step (daily operations).

Note: If the Air Compressor is not working properly, the pressure gauge will indicate that there is a decrease in pressure in the air tank. If there is an air leak from the compressor the pressure in the air tank decreases, the pressure switch resets and the motor automatically turns back on.

If you detect an air leakage, turn the power switch to the Off position, release the air from the tank by opening the tank drain valve.. Unplug the power supply cord and contact Customer Support for Assistance.

! WARNING



FLYING OBJECTS

Flying objects can cause injury to the eyes, head and other parts of the body.

Air-powered equipment and power tools are capable of propelling items (metal chips, fasteners and particulates) at high speed into the air and could result in injury.

Always wear approved head and eye protection.

Never point the air stream at any part of your body, or at another person or animal.

When operating the air compressor, make sure all other people and animals maintain a safe distance.

Do not move the air compressor when the air tank is under pressure.

Never use the air hoses to pull or move the air compressor.

Keep the air compressor on a flat surface.

Daily Operation

Starting the compressor:

1. Turn the air compressor power switch to the OFF position.
2. Attach the air hose to the 1/4" Female Industrial quick connector on the air compressor.
3. Close the drain valve and have air filter attached
4. The vehicle's engine must be running when using the air compressor.
5. Attach the Positive battery clamp (Red) to the Positive Terminal of the battery and the Negative battery clamp (Black) to the Negative Terminal of the battery.
6. Turn the air compressor power switch to the ON position.
7. Let the compressor motor run and tank fill until motor turns off.
8. To regulate the air flow.
While the air compressor is running, turn "On" your tool and turn the regulator knob to the right increasing the pressure.
Turn the pressure up until the desired pressure is reached.

Shutting down the compressor:

1. Turn the power switch to the OFF position.
2. First remove Red (Positive) and then the Black (Negative) Battery Clamps.
3. Reduce the pressure in the air tank through the air hose.

! WARNING



HOT SURFACE



FIRE

Air compressor surfaces become hot during operation.

DO NOT touch hot surfaces, because they can cause severe burns.

Do not touch the air compressor's cylinder head. During operation, the cooling fins of the cylinder head and delivery pipe become hot.

Allow the air compressor to cool before touching it.

DO NOT place a storage cover on the unit during operation. Only place a cover on the air compressor after it has thoroughly cooled down.

MAINTENANCE

Draining the Air Tank

The frequency at which you should drain the air tank depends on the environmental conditions and the amount of operating time logged. The average draining frequency is every 1 to 2 days.

1. Place the air compressor above a container capable of holding water.
2. With compressed air in the air tank, slowly turn the drain valve knob to the forward (open) or straight position. The water in the air tank will drain out.
3. After all of the accumulated water has drained out, turn the drain valve knob to the closed or left position in order to avoid leakage.
4. Draining the air tank protects parts from rust and corrosion.

Cleaning or Changing the Air Filter

The air filter is designed to reduce noise and help prevent particulates in the air from entering and damaging the air compressor.

After being used for a period of time, the air filter will become clogged. This will reduce the air intake capabilities of the air compressor, reducing performance. Therefore, the air filter must be cleaned or replaced regularly.

1. Open the lid on the air filter, then remove the air filter element.
2. To clean the element blow off or brush off the dirt and dust.
3. If clogged, replace with a new air filter.

Testing for Leaks

Make sure all connections are tight. Do not overtighten.

A small leak in any hose or pipe connection will reduce the air compressor's performance.

To test for small leaks, spray a small amount of soapy water on the area suspected of leaking. If the soap bubbles, replace the broken part.

Cleaning

Clean items with a soft brush, or wipe with a moistened cloth using a biodegradable solvent.

Do not use flammable liquids such as gasoline or alcohol. Always keep parts clean from dirt and dust for better performance.

Pressure Switch

The pressure switch is factory pre-set to shut off at between 115 - 120 PSI and to re-start at between 85 -90 PSI

STORAGE

Before storing for a prolonged period of time:

1. Turn off the power supply.
2. Disconnect the power cord from the power supply and wrap the power cord around the air compressor handle to reduce the risk of damage.
3. Pull the relief valve and release all the pressure from the air tank.
4. Clean the air compressor to remove all dirt and dust.
5. Cover the air compressor with a cover to protect the unit from dust and moisture.
6. Do not stack or store any items on top of or around the air compressor. Damage could occur.

CAUTION

**TO REDUCE THE RISK OF ELECTRIC SHOCK,
DO NOT EXPOSE TO RAIN.**

STORE INDOORS.

TROUBLESHOOTING

PROBLEM	POSSIBLE CAUSE	POSSIBLE SOLUTIONS
Pressure drop in the tank.	Air leaks at connections.	Let the compressor build pressure in the tank, to the maximum pressure if possible. Brush soapy water on air connections and look carefully for air bubbles. Tighten leaky connections. If the problem persists, contact the seller for further advice.
The unloader valve leaks when the compressor is idle.	Unloader valve seal is defective.	Let the air in the air tank flow out until all the pressure is released. Then remove the unloader valve plug and clean the valve seal. If necessary, replace the seal and then reinstall all components.
The compressor stopped and does not start.	The thermal protector turned on because the motor is overheating.	Check that the main voltage corresponds to the air compressor specifications. Check power cords for wear or damage. Excessive use (over 1 hour continuous use) can cause the motor to overheat Allow the motor to cool down.
	Motor windings or Capacitor are burned.	Contact Customer Support.
The motor does not start and makes a humming noise.	Motor air locked.	Open drain valve and push current protector button
The motor does not start or starts slowly.	Low voltage supply to the motor.	Check that the main voltage corresponds to the air compressor specifications. Ensure that the vehicle is running and the battery is fully charged. Check that the power cords are not damage or worn.
The compressor is noisy with metallic clangs.	Compressor head gasket or reed valve is damaged	Stop the compressor and contact the dealer.
The compressor does not reach the maximum pressure.	Compressor head gasket or reed valve is faulty.	Stop the compressor and contact the dealer.
The compressor doesn't seem to provide as much air as it did when new and/or the compressor cuts off within a much shorter time period.	The pressure switch needs adjusting.	Stop the compressor and contact the dealer.
	The tank is full of water due to condensation.	Open the drain valve and release the water from the tank.
The motor pump unit does not stop when the tank pressure reaches its maximum working pressure (120 PSI).	Pressure switch defective or needs adjusting.	Stop the compressor immediately and contact Customer Support.

CALIFORNIA AIR TOOLS INC. LIMITED WARRANTY

This warranty is limited to Air Compressors distributed by:

California Air Tools, Inc.
8560 Siempre Viva Road
San Diego, CA 92154

Limited Warranty

California Air Tools Inc. will repair or replace, free of charge, to the original retail customer who purchased a California Air Tools, Inc. Air Compressor from an authorized dealer, distributor or distributor's dealer in North America.

This warranty does not transfer to subsequent owners.

California Air Tools Inc. will repair or replace, at its option, any parts of the portable air compressor that are proven by an authorized service center to be defective in material or workmanship under normal use during the applicable warranty time period as stated below. This limited warranty covers the cost of the replacement parts and labor for all defects when installed by an authorized service center. Transportation charges are the responsibility of the customer. Any part replaced under warranty becomes the property of California Air Tools Inc.

All parts replaced under warranty will be considered as part of original product, and any warranty on those parts will expire coincident with the original product warranty.

Limited Warranty Periods

Non-commercial / Non-rental (personal use by a retail customer):	1 year parts and labor
Commercial / Rental (usage for income, business use):	1 year parts and labor

The limited warranty period begins on the date of retail purchase by the original purchaser.

Disclaimers, Limitations of Remedies & Exclusions

This warranty gives you specific legal rights, and you may also have other rights which may vary from state to state.

Disclaimer of Other Warranties

To the fullest extent permitted by applicable law, this limited warranty is exclusive and expressly in lieu of any and all other warranties, including, without limitation, any implied warranties of merchantability or fitness for a particular purpose or any other implied warranties that may arise from the course of dealing or usage of the trade. California Air Tools Inc. hereby disclaims and excludes all other warranties. To the extent that California Air Tools Inc. products are consumer products under applicable federal and state law with respect to any customer, the duration of any implied warranties (including but not limited to implied warranties of merchantability or fitness for a particular purpose) are limited to the shortest duration permitted by applicable law or the Limited Warranty period provided herein, whichever is longer.

Limitations of Remedies

California Air Tools Inc. shall not be liable to customer, or anyone claiming under customer, for any other obligations or liabilities, including but not limited to, obligations or liabilities arising out of breach of contract or warranty, negligence or other tort or any theory of strict liability, with respect to the air compressor or California Air Tools Inc. acts or omissions or otherwise. To the fullest extent permitted by applicable law, California Air Tools Inc. shall not in any event be liable for incidental, compensatory, punitive, consequential, indirect, special or other damages, including but not limited to loss of use, loss of income, loss of time, loss of sales, injury to personal property, or liability customer incurs with respect to any other person, or any other type or form of consequential damage or economic loss.

Exclusions

In addition to the foregoing disclaimers, limitations and terms, this limited warranty shall not apply to and does not cover accessories, nor does it cover products that are in any way subject to any of the following:

1. Improper setup, installation or storage.
2. Lack of proper maintenance and service.
3. Accident, damage, abuse or misuse.
4. Abnormal operating conditions or applications.
5. Repair or modification by customer or any third party without written consent of California Air Tools Inc.
6. Use under operating conditions or in applications not recommended by California Air Tools Inc.
7. Normal wear.
8. The use of accessories or attachments not recommended by California Air Tools Inc.
9. Acts of God.

The application of these exclusions will be determined at the sole discretion of California Air Tools Inc.

Registration

Warranty registration with California Air Tools Inc. is required on all products.

You can mail the enclosed registration form or register on-line.

Maintenance & Troubleshooting Guide

California Air Tools provides a Maintenance & Troubleshooting Guide on our website WWW.CALIFORNIAAIRTOOLS.COM.

This is valuable information regarding set-up, operation and maintenance of your air compressor.

Please visit our website for beneficial information.

Service or Parts

Warranty is also available by keeping and showing your original receipt from the date of purchase to an Authorized California Air Tools Service Center.

WWW.CALIFORNIAAIRTOOLS.COM

Go to the “Contact Us” Tab

Click on “Service & Parts” Button for the Fastest Service.

For warranty inquiries call 1-866-409-4581

PRODUCT REGISTRATION

To register your product, please complete the information below and mail to the mailing address at the end of this page.

1. Personal Information:

Full Name (Include Middle Initial): _____

Mailing Address: _____

City: _____ State: _____ Zip Code: _____

Phone Number: _____

E-mail Address: _____

(Check here to receive product information and offers via e-mail)

(Check here to receive product information from other companies via e-mail)

2. Product Information:

Date of Purchase: _____ (MM / DD / YYYY)

Model Number: _____

Serial Number: _____ (Found on name plate)

Purchased Location: _____

Purchase Price: _____

Type of Primary Use for this Product: Home Recreation Emergency Rental Commercial

Other _____

Features Influencing Product Purchase: Brand Portability Power Rating Price Warranty

Other Features (describe) _____

What other Power Equipment are you interested in purchasing in the future? _____

Thank you for registering your product.

Mail to:
California Air Tools
8560 Siempre Viva Road
San Diego, CA 92154