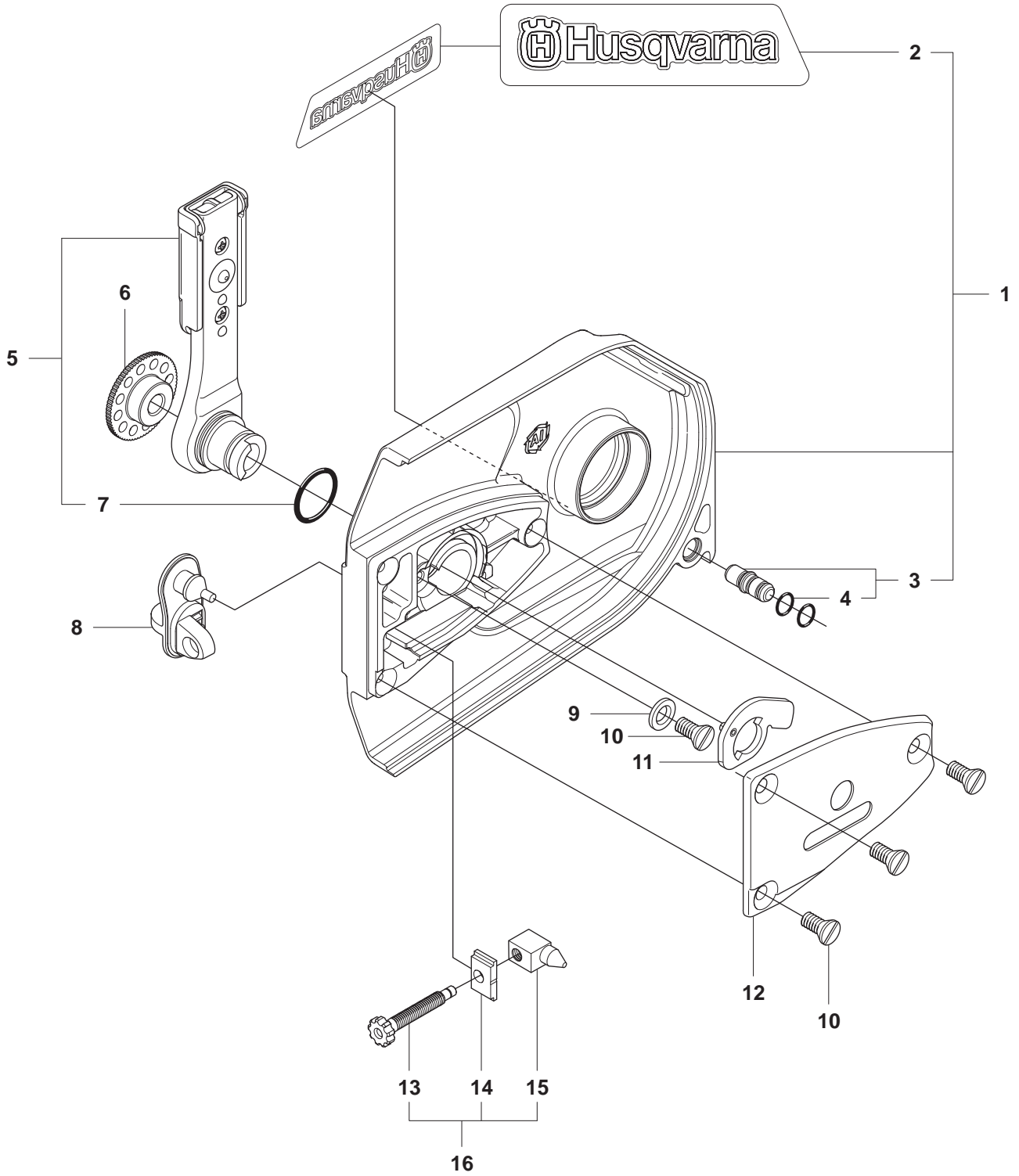


K 970 Chain  
Reservdelar  
Spare parts  
Ersatzteile  
Pieces de rechange  
Piezas de repuesto  
Ricambi  
Peças sobresselente

No.	Pos.	Description	No.	Pos.	Description
501 27 08-01	C	GUIDE BUSHING	506 29 57-01	G	NIPPLE
501 37 56-04	J	FLYWHEEL	506 29 88-01	G	FILTER
501 48 54-02	J	SPARK PLUG CAP	506 31 30-01	F	LABLE
501 63 48-01	J	SPRING	506 31 86-02	J	STOP SWITCH
501 67 32-03	J	PAWL	506 32 76-02	C	BAR BOLT
501 83 98-01	J	CABLE	506 32 89-51	G	HOSE KIT
501 97 18-01	L	SCREW	506 32 95-05	B	BAR BRACKET
501 98 10-20	GH	SCREW	506 33 24-02	G	RUBBER BLOCK
502 41 22-01	G	HOSE CLAMP	506 33 25-05	A	CLUTCH COVER
502 44 58-01	L	GASKET KIT	506 33 28-01	A	LOCK WASHER
502 44 59-01	L	REPAIR KIT	506 33 32-01	A	PLATE
502 47 16-01	F	GROUND SUPPORT	506 33 33-01	A	PAWL
502 47 18-01	F	THROTTLE CONTROL	506 33 34-02	A	COVER
503 12 79-01	H	STARTER HANDLE	506 33 35-01	A	CAP
503 14 51-01	B	CLUTCH SPRING	506 33 38-02	B	CLUTCH ASSY
503 21 07-22	H	SCREW	506 33 42-01	B	RIM SPROCKET
503 21 27-10	G	SCREW	506 33 44-01	B	SUPPORT CUP
503 21 28-06	J	SCREW	506 33 45-01	G	BACKING PLATE
503 21 28-10	FH	SCREW	506 33 46-01	G	SPRAY GUARD
503 21 53-10	B	SCREW	506 33 56-15	H	STARTER CORD
503 21 53-16	L	SCREW	506 33 56-50	H	STARTER CORD
503 21 53-20	J	SCREW	506 34 09-11	B	GEAR WHEEL
503 21 53-25	D	SCREW	506 34 10-04	A	LEVER
503 21 53-26	K	SCREW	506 34 62-02	M	BAR
503 21 53-30	KL	SCREW	506 34 72-01	A	LEVER
503 21 53-49	C	SCREW	506 35 25-01	G	HOSE
503 21 53-56	K	SCREW	506 35 44-02	B	WEAR PROTECTION
503 21 53-65	B	SCREW	506 35 94-03	A	SCREW CPL
503 21 54-20	G	SCREW	506 37 28-01	D	MUFFLER
503 22 10-11	J	NUT	506 37 81-01	CDM	GASKET MUFFLER
503 22 21-02	C	NUT	506 38 26-01	M	COMBINATION TOOL
503 23 00-42	J	WASHER STEEL	506 38 77-01	A	SCREW
503 23 01-01	J	WASHER STEEL	506 38 78-34	J	IGNITION CABLE
503 23 04-02	D	WASHER	506 39 88-01	A	ADJUSTING NUT
503 23 51-09	J	SPARK PLUG	506 39 96-02	B	SHIELD
503 25 00-02	CE	BALL BEARING	506 40 13-01	B	BUSHING
503 25 53-01	B	NEEDLE BEARING	506 41 32-02	D	PISTON
503 25 61-01	DE	NEEDLE BEARING	506 41 39-04	CDM	GASKET
503 26 02-04	CDM	SEALING RING	506 41 41-01	L	INLET PIPE
503 26 30-21	G	O-RING	506 41 42-01	L	PLATE
503 26 60-03	G	COUPLER	506 41 44-01	E	CUP
503 26 60-04	G	COUPLER	510 11 56-01	J	IGNITION MODULE
503 28 90-35	D	PISTON RING	510 24 39-01	L	FILTER CONNECTION
503 57 89-01	F	HOLDER ASSY	510 24 41-04	K	AIR FILTER
503 66 56-01	D	DECOMPRESSION VALVE	510 25 52-01	F	THROTTLE LOCK OUT
503 73 58-01	F	BUSHING	521 92 67-01	L	INLET PIPE
504 90 94-25	G	SCREW	522 79 96-01	F	HOLDER ASSY
505 02 99-01	G	HAND GUARD	522 85 61-01	C	RUBBER BUSHING
505 14 84-01	L	LEVER	522 85 62-01	L	FLANGE INLET PIPE
505 27 75-16	J	INSULATING CAP	522 94 20-01	L	CARBURETTOR
505 28 33-06	L	HOSE CLAMP	523 03 27-01	G	HANDLE
505 34 94-01	H	STARTER COVER	525 57 11-01	H	DECAL
505 42 45-03	G	ANTIVIBRATION ELEMENT	525 57 16-04	K	DECAL
506 00 69-01	J	SCREW	525 57 20-01	F	DECAL START
506 09 56-02	G	HOSE CLAMP			INSTRUCTION
506 09 56-04	G	HOSE CLAMP	525 61 70-04	K	SEALING
506 23 20-11	L	CHOKE	525 76 35-01	K	DECAL
506 25 14-01	H	GROMMET	537 04 24-04	F	FUEL HOSE
506 25 30-01	H	COMPRESSION SPRING	537 20 56-01	F	COVER
506 25 59-03	F	TANK CAP ASSY	537 20 85-01	F	CABLE LEVER
506 25 81-02	H	STARTER PULLEY	537 20 98-01	F	SPRING
506 25 89-01	H	RECOIL SPRING	537 21 03-05	F	ANTIVIBRATION ELEMENT
506 26 31-01	H	SPACING SLEEVE	537 21 03-09	F	ANTIVIBRATION ELEMENT
506 26 41-01	F	FUEL FILTER	537 21 03-10	F	ANTIVIBRATION ELEMENT
506 26 41-11	F	FUEL FILTER ASSY	537 35 95-01	F	TANK VENT ASSY
506 27 11-01	F	HOSE CLAMP	540 05 49-02	F	AIR PURGE
506 27 25-01	L	WEAR PROTECTION	544 05 77-01	A	GUIDE PIN
506 28 75-02	B	CIRCLIP	544 06 12-01	FG	SCREW
506 28 76-01	B	RETAINING RING	544 11 39-01	L	CONSOLE
506 29 21-01	F	GASKET	544 15 01-01	L	FLANGE

No.	Pos.	Description	No.	Pos.	Description
544 21 52-01	D	HEAT DEFLECTOR			
544 21 84-01	D	SCREW			
544 22 98-03	CDM	GASKET KIT			
544 23 26-01	L	CHISEL GUIDE			
544 28 75-02	H	COOLING AIR CONDUCTOR			
544 32 49-30	F	FUEL HOSE			
544 32 50-02	F	FUEL HOSE			
544 87 23-01	A	LABEL			
544 93 56-03	D	CYLINDER ASSY			
544 98 39-02	E	CRANKSHAFT ASSY			
574 44 42-01	F	CLIPS			
574 50 58-05	F	FUEL TANK ASSY			
574 50 73-03	H	STARTER ASSY			
575 52 65-01	F	CHECK VALVE			
576 42 69-03	K	CYLINDER COVER			
576 43 14-01	K	COVER			
576 49 04-01	FL	THROTTLE CABLE ASSY			
576 49 94-01	CDM	GASKET			
576 73 80-01	K	FILTER COVER			
576 82 16-01	C	CRANKCASE ASSY			
576 82 16-03	P	LONG BLOCK			
576 85 16-02	J	PROTECTIVE HOSE			
577 30 84-01	B	PIPE			
578 06 53-01	K	SEALING			
720 12 40-20	F	PARALLEL PIN			
720 13 07-10	B	PIN			
723 53 27-51	A	SCREW			
725 54 51-01	C	SCREW			
725 64 53-01	B	SCREW			
729 52 89-71	K	SCREW			
737 44 13-00	D	CIRCLIP			
740 42 04-00	A	O-RING			
740 43 13-00	H	O-RING			
740 44 07-00	B	O-RING			
740 48 18-02	A	O-RING			

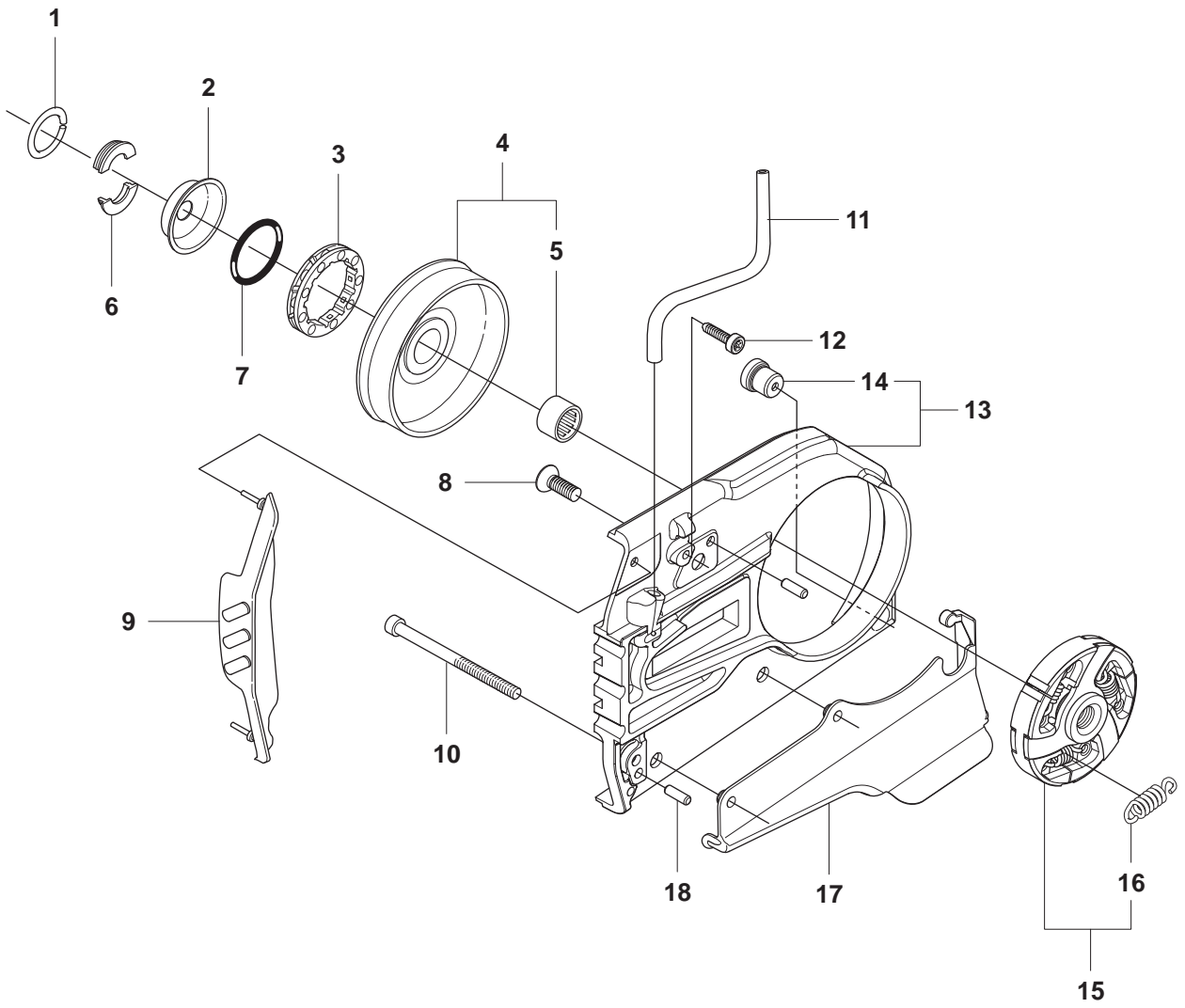
**A** K970 Chain



**Page A**  
**K970 Chain**

<b>Pos.</b>	<b>Part No.</b>	<b>Description</b>	<b>Quantity</b>	<b>Notes</b>	<b>New Part</b>
1	506 33 25-05	CLUTCH COVER	1	Incl. 2 - 3	
2	544 87 23-01	LABEL	1		
3	544 05 77-01	GUIDE PIN	1	Incl. 4	
4	740 42 04-00	O-RING	2		
5	506 34 10-04	LEVER	1	Incl. 7	
6	506 39 88-01	ADJUSTING NUT	1		
7	740 48 18-02	O-RING	1		
8	506 33 34-02	COVER	1		
9	506 33 28-01	LOCK WASHER	1		
10	723 53 27-51	SCREW	3		
11	506 34 72-01	LEVER	1		
12	506 33 35-01	CAP	1		
13	506 38 77-01	SCREW	1		
14	506 33 32-01	PLATE	1		
15	506 33 33-01	PAWL	1		
16	506 35 94-03	SCREW CPL	1	Incl. 13 - 15	

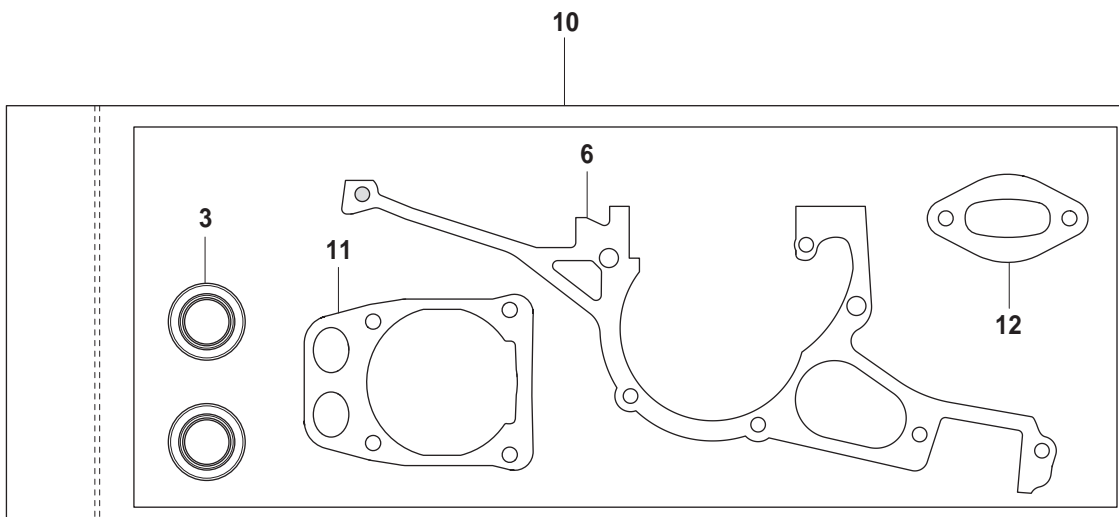
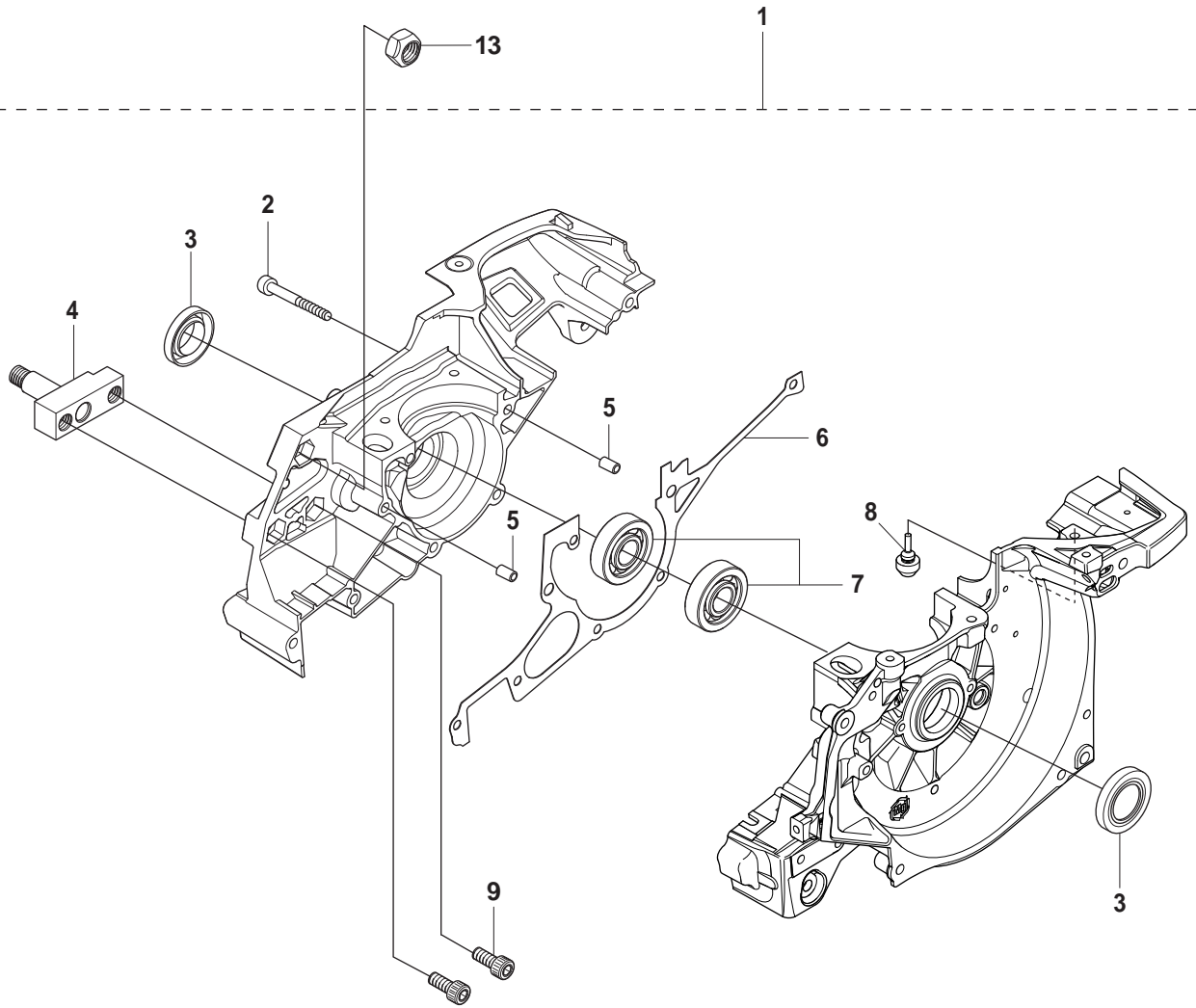
**B** K970 Chain



**Page B**  
**K970 Chain**

<b>Pos.</b>	<b>Part No.</b>	<b>Description</b>	<b>Quantity</b>	<b>Notes</b>	<b>New Part</b>
1	506 28 76-01	RETAINING RING	1		
2	506 33 44-01	SUPPORT CUP	1		
3	506 33 42-01	RIM SPROCKET	1		
4	506 34 09-11	GEAR WHEEL	1	Incl. 5	
5	503 25 53-01	NEEDLE BEARING	1		
6	506 28 75-02	CIRCLIP	2		
7	740 44 07-00	O-RING	1		
8	725 64 53-01	SCREW	1		
9	506 35 44-02	WEAR PROTECTION	1		
10	503 21 53-65	SCREW	1		
11	577 30 84-01	PIPE	1		
12	503 21 53-10	SCREW	1		
13	506 32 95-05	BAR BRACKET	1	Incl. 14	
14	506 40 13-01	BUSHING	1		
15	506 33 38-02	CLUTCH ASSY	1	Incl. 16	
16	503 14 51-01	CLUTCH SPRING	3		
17	506 39 96-02	SHIELD	1		
18	720 13 07-10	PIN	2		

**C** K970 Chain

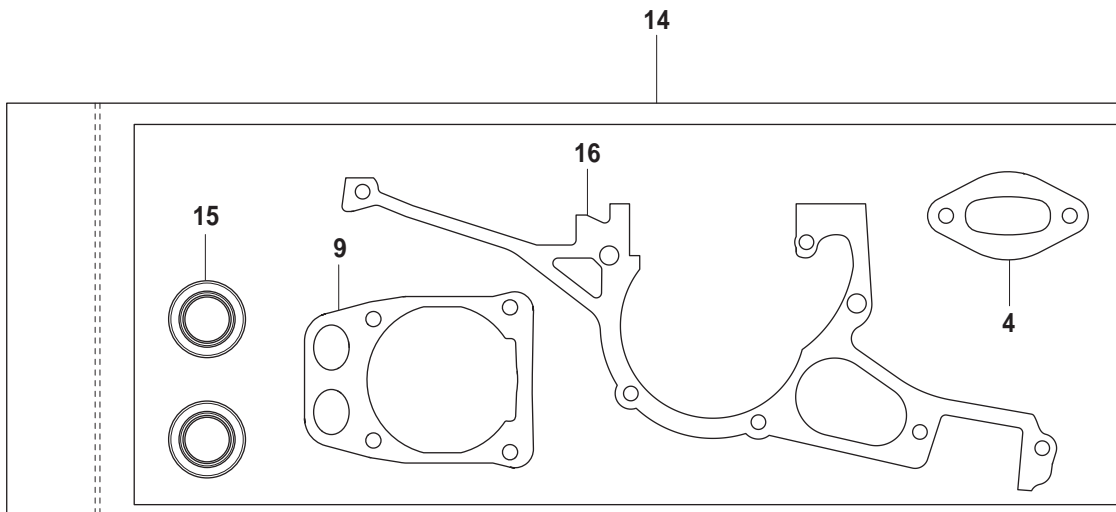
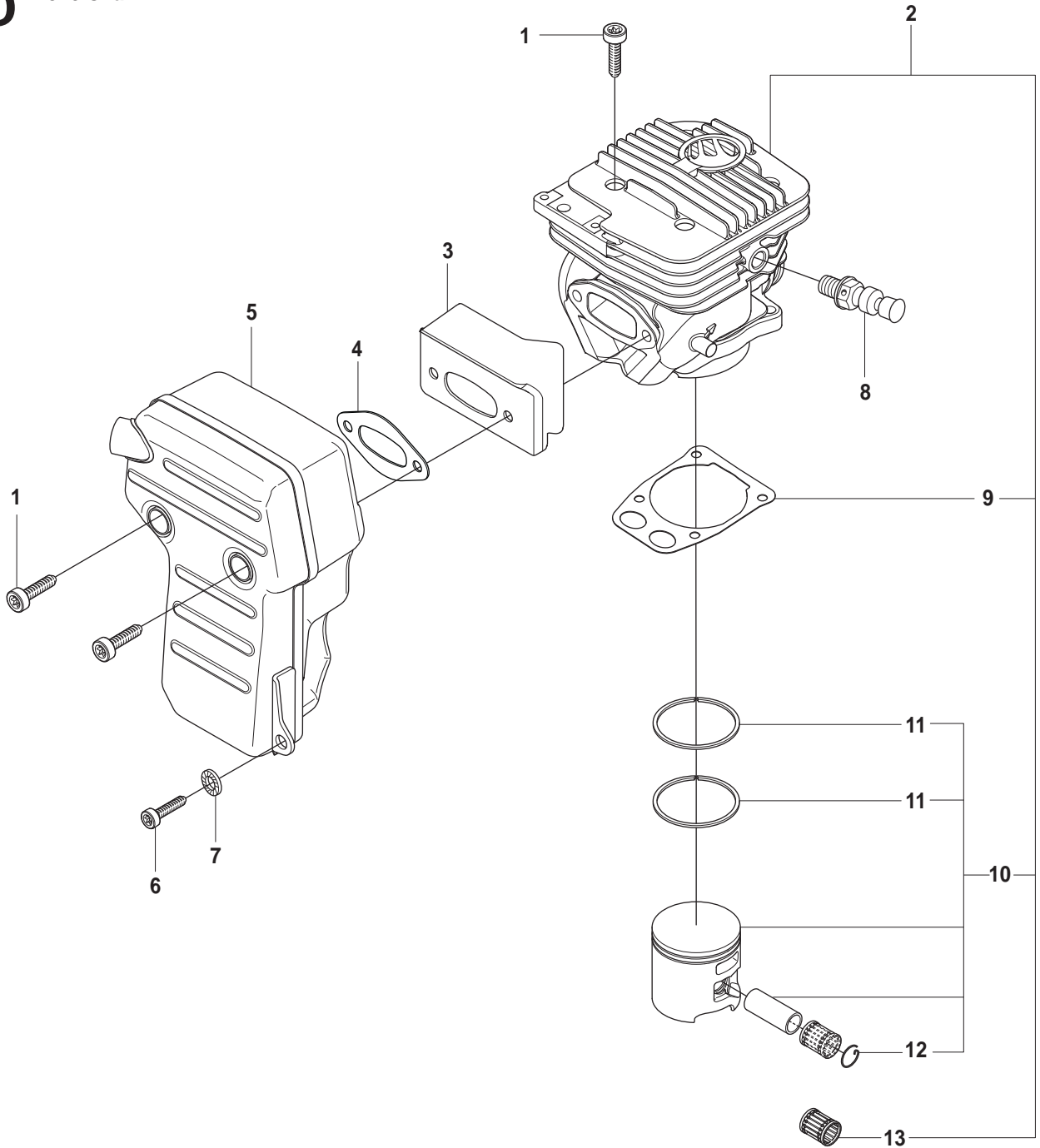




**Page C**  
**K970 Chain**

<b>Pos.</b>	<b>Part No.</b>	<b>Description</b>	<b>Quantity</b>	<b>Notes</b>	<b>New Part</b>
1	576 82 16-01	CRANKCASE ASSY	1	Incl. 2 - 12	
2	503 21 53-49	SCREW	7		
3	503 26 02-04	SEALING RING	2		
4	506 32 76-02	BAR BOLT	1		
5	501 27 08-01	GUIDE BUSHING	2		
6	506 41 39-04	GASKET	1		
7	503 25 00-02	BALL BEARING	2		
8	522 85 61-01	RUBBER BUSHING	1		
9	725 54 51-01	SCREW	2		
10	544 22 98-03	GASKET KIT	1	Incl. 3 , 7, 11 - 12	
11	576 49 94-01	GASKET	1		
12	506 37 81-01	GASKET MUFFLER	1		
13	503 22 21-02	NUT	1		

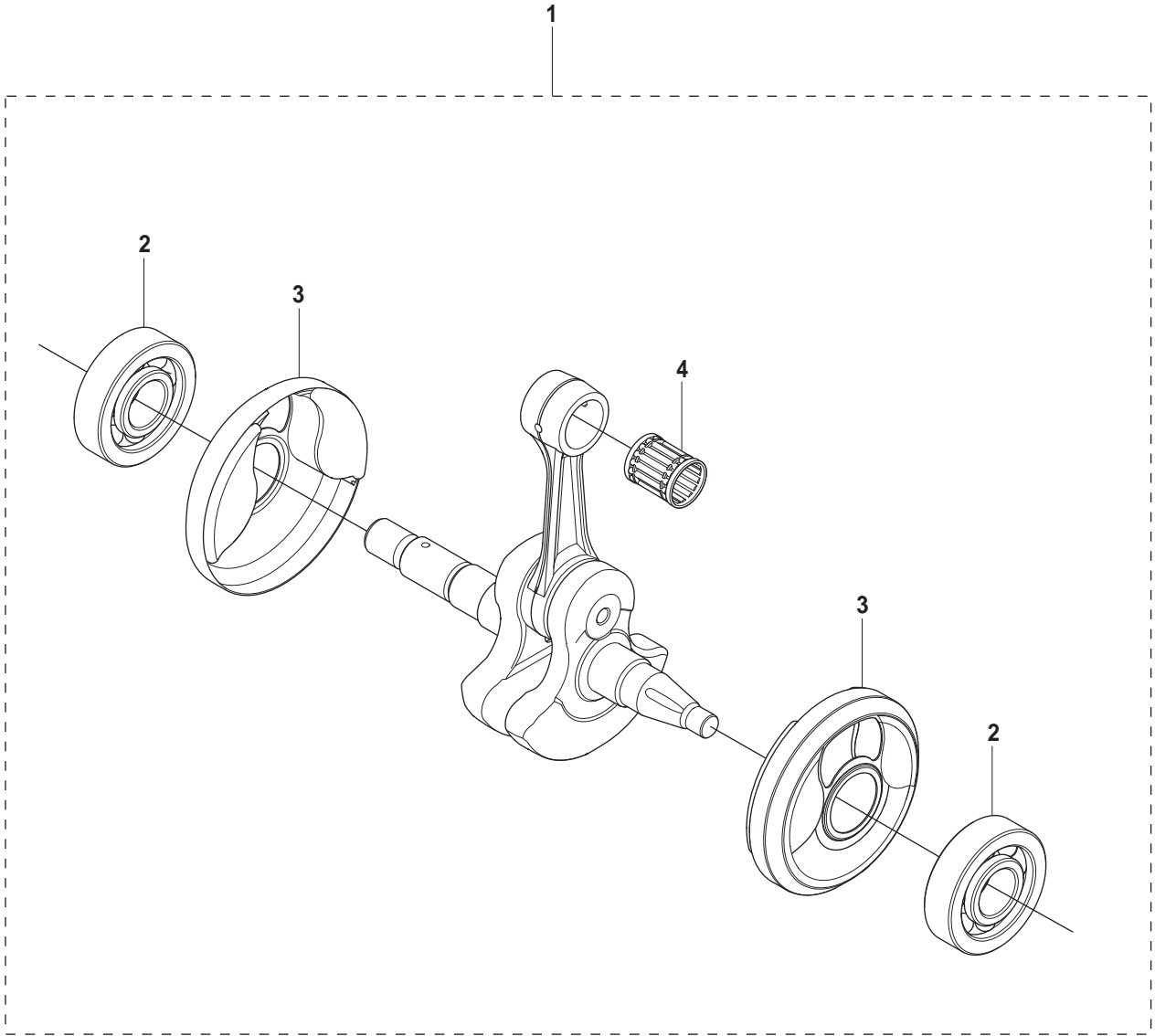
**D** K970 Chain



**Page D**  
**K970 Chain**

Pos.	Part No.	Description	Quantity	Notes	New Part
1	544 21 84-01	SCREW	6		
2	544 93 56-03	CYLINDER ASSY	1	Incl. 9 - 10, 13	
3	544 21 52-01	HEAT DEFLECTOR	1		
4	506 37 81-01	GASKET MUFFLER	1		
5	506 37 28-01	MUFFLER	1		
6	503 21 53-25	SCREW	1		
7	503 23 04-02	WASHER	1		
8	503 66 56-01	DECOMPRESSION VALVE	1		
9	576 49 94-01	GASKET	1		
10	506 41 32-02	PISTON	1	Incl. 11 - 12	
11	503 28 90-35	PISTON RING	2		
12	737 44 13-00	CIRCLIP	2		
13	503 25 61-01	NEEDLE BEARING	1		
14	544 22 98-03	GASKET KIT	1	Incl. 4, 9, 15 - 16	
15	503 26 02-04	SEALING RING	2		
16	506 41 39-04	GASKET	1		

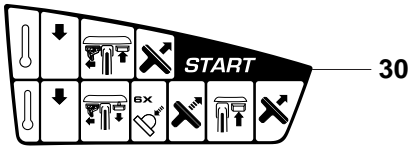
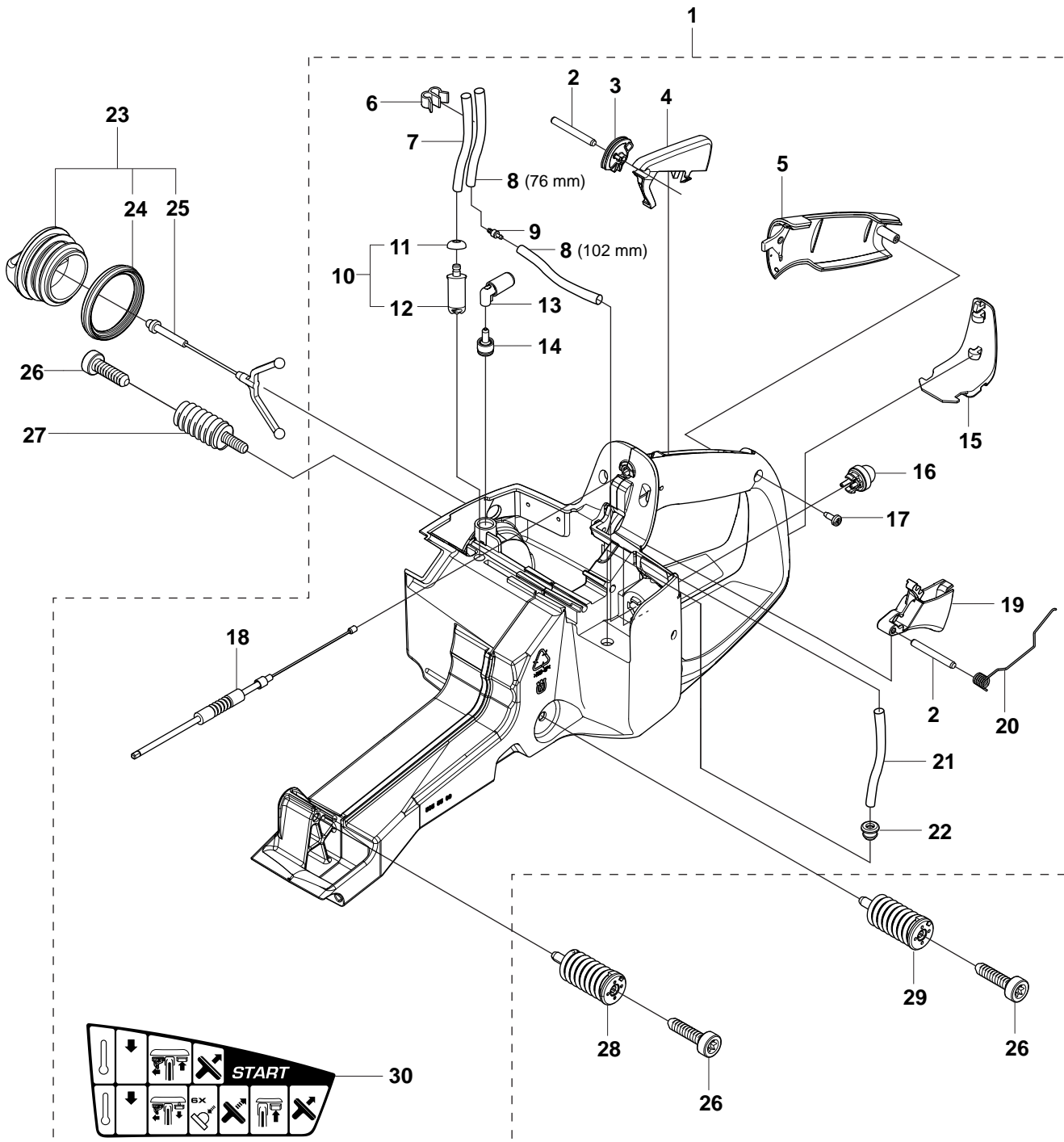
**E** K970 Chain



**Page E**  
**K970 Chain**

<b>Pos.</b>	<b>Part No.</b>	<b>Description</b>	<b>Quantity</b>	<b>Notes</b>	<b>New Part</b>
1	544 98 39-02	CRANKSHAFT ASSY	1	Incl. 2 - 4	
2	503 25 00-02	BALL BEARING	2		
3	506 41 44-01	CUP	2		
4	503 25 61-01	NEEDLE BEARING	1		

# F K970 Chain



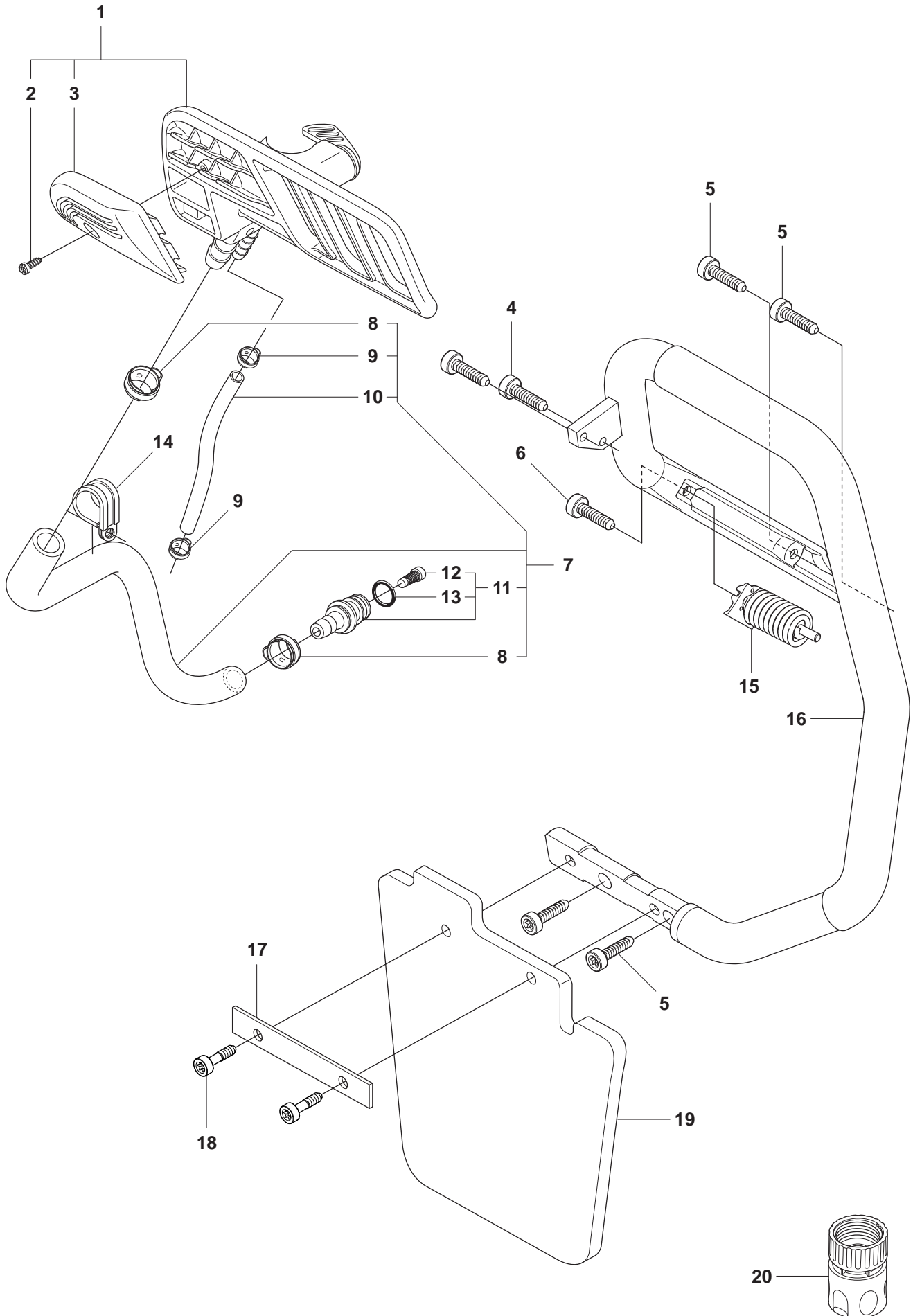
**燃料は**  
 ガソリン **25 : 1** バイク専用オイル

31

**Page F**  
**K970 Chain**

Pos.	Part No.	Description	Quantity	Notes	New Part
1	574 50 58-05	FUEL TANK ASSY	1	Incl. 2 - 21	
2	720 12 40-20	PARALLEL PIN	2		
3	537 20 85-01	CABLE LEVER	1		
4	510 25 52-01	THROTTLE LOCK OUT	1		
5	537 20 56-01	COVER	1		
6	574 44 42-01	CLIPS	1		
7	544 32 50-02	FUEL HOSE	1	300 mm	
8	537 04 24-04	FUEL HOSE	1	190 mm	
9	575 52 65-01	CHECK VALVE	1		
10	506 26 41-11	FUEL FILTER ASSY	1	Incl. 11 - 12	
11	506 27 11-01	HOSE CLAMP	1		
12	506 26 41-01	FUEL FILTER	1		
13	522 79 96-01	HOLDER ASSY	1		
14	537 35 95-01	TANK VENT ASSY	1		
15	502 47 16-01	GROUND SUPPORT	1		
16	540 05 49-02	AIR PURGE	1		
17	503 21 28-10	SCREW	1		
18	576 49 04-01	THROTTLE CABLE ASSY	1		
19	502 47 18-01	THROTTLE CONTROL	1		
20	537 20 98-01	SPRING	1		
21	544 32 49-30	FUEL HOSE	1	70 mm	
22	503 73 58-01	BUSHING	1		
23	506 25 59-03	TANK CAP ASSY	1	Incl. 24 - 25	
24	506 29 21-01	GASKET	1		
25	503 57 89-01	HOLDER ASSY	1		
26	544 06 12-01	SCREW	3		
27	537 21 03-09	ANTIVIBRATION ELEMENT	1		
28	537 21 03-10	ANTIVIBRATION ELEMENT	1		
29	537 21 03-05	ANTIVIBRATION ELEMENT	1		
30	525 57 20-01	DECAL START INSTRUCTION	1		
31	506 31 30-01	LABLE	1		

**G** K970 Chain

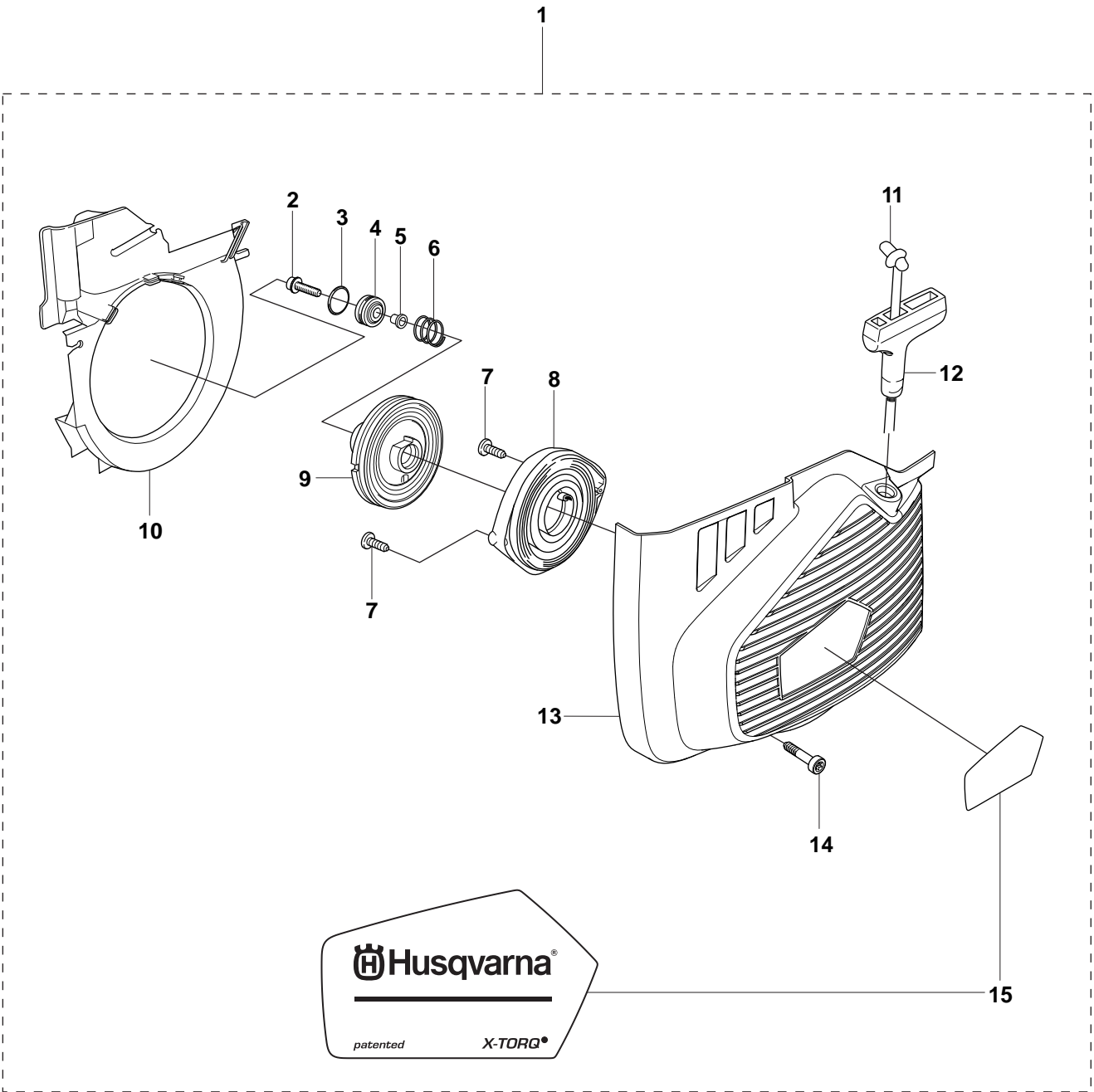




**Page G**  
**K970 Chain**

Pos.	Part No.	Description	Quantity	Notes	New Part
1	505 02 99-01	HAND GUARD	1	Incl. 2 - 3	
2	503 21 27-10	SCREW	1		
3	506 33 24-02	RUBBER BLOCK	1		
4	504 90 94-25	SCREW	2		
5	503 21 54-20	SCREW	4		
6	544 06 12-01	SCREW	1		
7	506 32 89-51	HOSE KIT	1	Incl. 8 - 11	
8	506 09 56-02	HOSE CLAMP	1		
9	506 09 56-04	HOSE CLAMP	2		
10	506 35 25-01	HOSE	1		
11	506 29 57-01	NIPPLE	1	Incl. 12 - 13	
12	506 29 88-01	FILTER	1		
13	503 26 30-21	O-RING	1		
14	502 41 22-01	HOSE CLAMP	1		
15	505 42 45-03	ANTIVIBRATION ELEMENT	1		
16	523 03 27-01	HANDLE	1		
17	506 33 45-01	BACKING PLATE	1		
18	501 98 10-20	SCREW	2		
19	506 33 46-01	SPRAY GUARD	1		
20	503 26 60-03	COUPLER	1	USA, Canada	
20	503 26 60-04	COUPLER	1		

# H K970 Chain

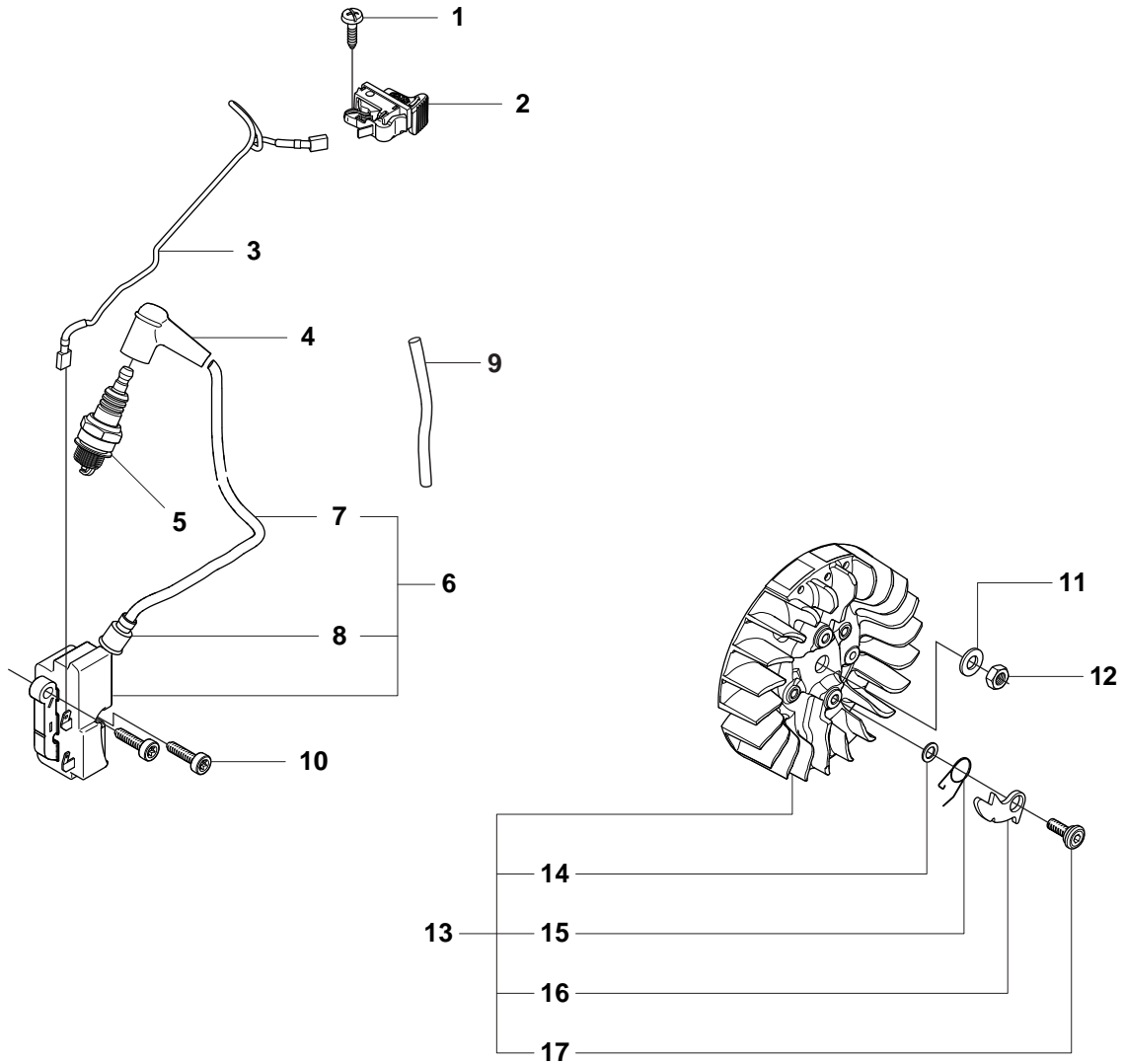


**Page H**  
**K970 Chain**

Pos.	Part No.	Description	Quantity	Notes	New Part
1	574 50 73-03	STARTER ASSY	1	Incl. 2 - 15	
2	503 21 07-22	SCREW	1		
3	740 43 13-00	O-RING	1		
4	506 25 14-01	GROMMET	1		
5	506 26 31-01	SPACING SLEEVE	1		
6	506 25 30-01	COMPRESSION SPRING	1		
7	503 21 28-10	SCREW	2		
8	506 25 89-01	RECOIL SPRING	1		
9	506 25 81-02	STARTER PULLEY	1		
10	544 28 75-02	COOLING AIR CONDUCTOR	1		
11	506 33 56-15	STARTER CORD	1		
11	506 33 56-50	STARTER CORD	1	50 m Coil	
12	503 12 79-01	STARTER HANDLE	1		
13	505 34 94-01	STARTER COVER	1		
14	501 98 10-20	SCREW	4		
15	525 57 11-01	DECAL	1		

# J

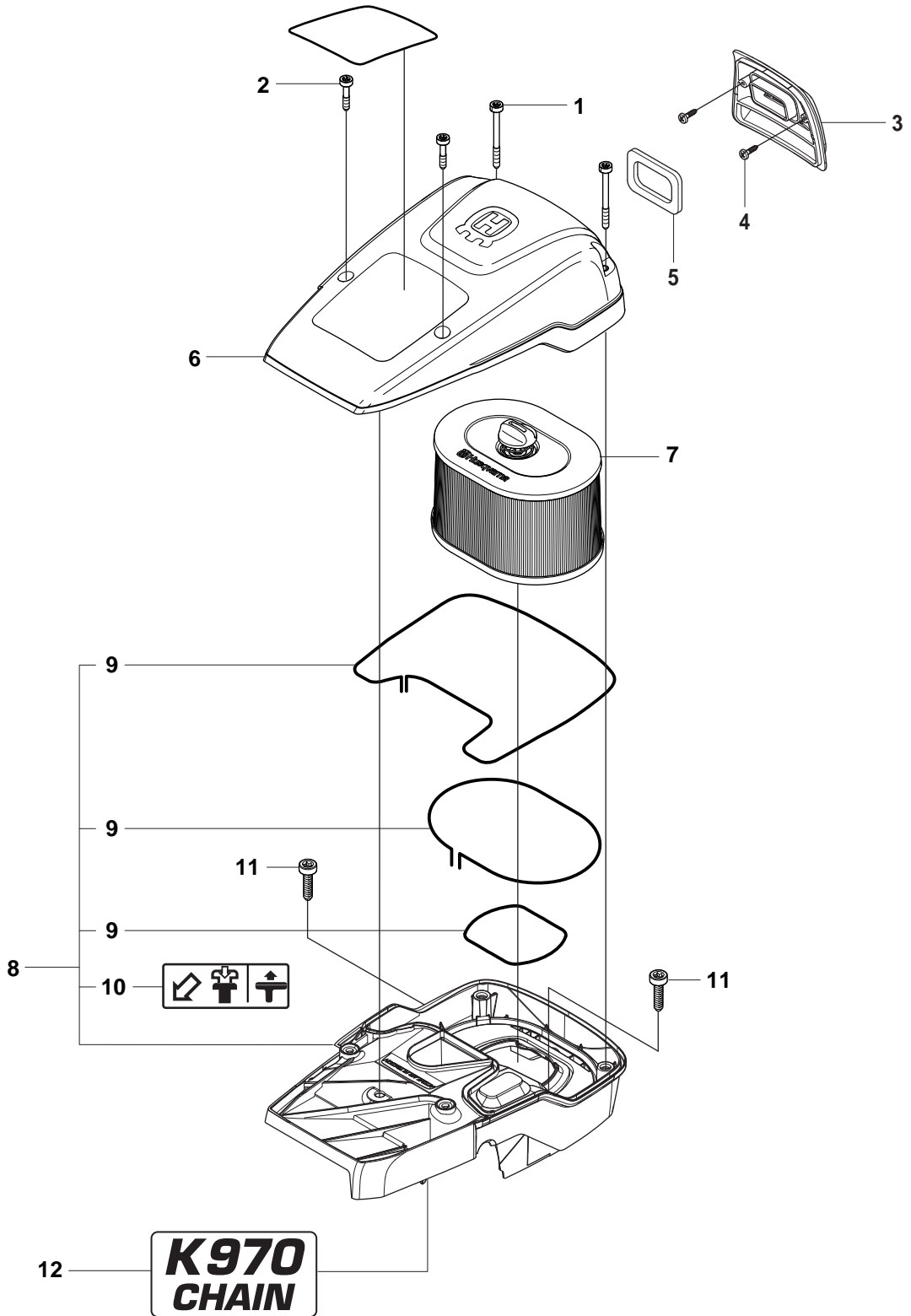
## K970 Chain



**Page J**  
**K970 Chain**

Pos.	Part No.	Description	Quantity	Notes	New Part
1	503 21 28-06	SCREW	1		
2	506 31 86-02	STOP SWITCH	1		
3	501 83 98-01	CABLE	1		
4	501 48 54-02	SPARK PLUG CAP	1		
5	503 23 51-09	SPARK PLUG	1	RCJ 6Y	
6	510 11 56-01	IGNITION MODULE	1	Incl. 7 - 8	
7	506 38 78-34	IGNITION CABLE	1		
8	505 27 75-16	INSULATING CAP	1		
9	576 85 16-02	PROTECTIVE HOSE	1		
10	503 21 53-20	SCREW	2		
11	503 23 01-01	WASHER STEEL	1		
12	503 22 10-11	NUT	1		
13	501 37 56-04	FLYWHEEL	1	Incl. 14 - 17	
14	503 23 00-42	WASHER STEEL	2		
15	501 63 48-01	SPRING	2		
16	501 67 32-03	PAWL	2		
17	506 00 69-01	SCREW	2		

# K K970 Chain

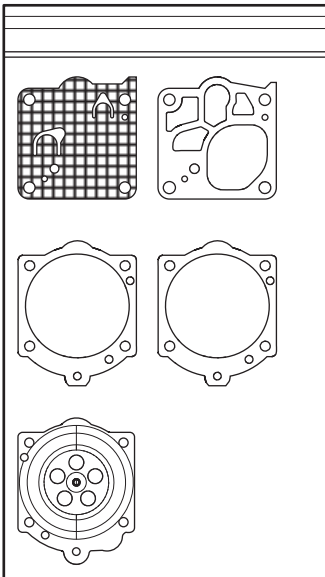
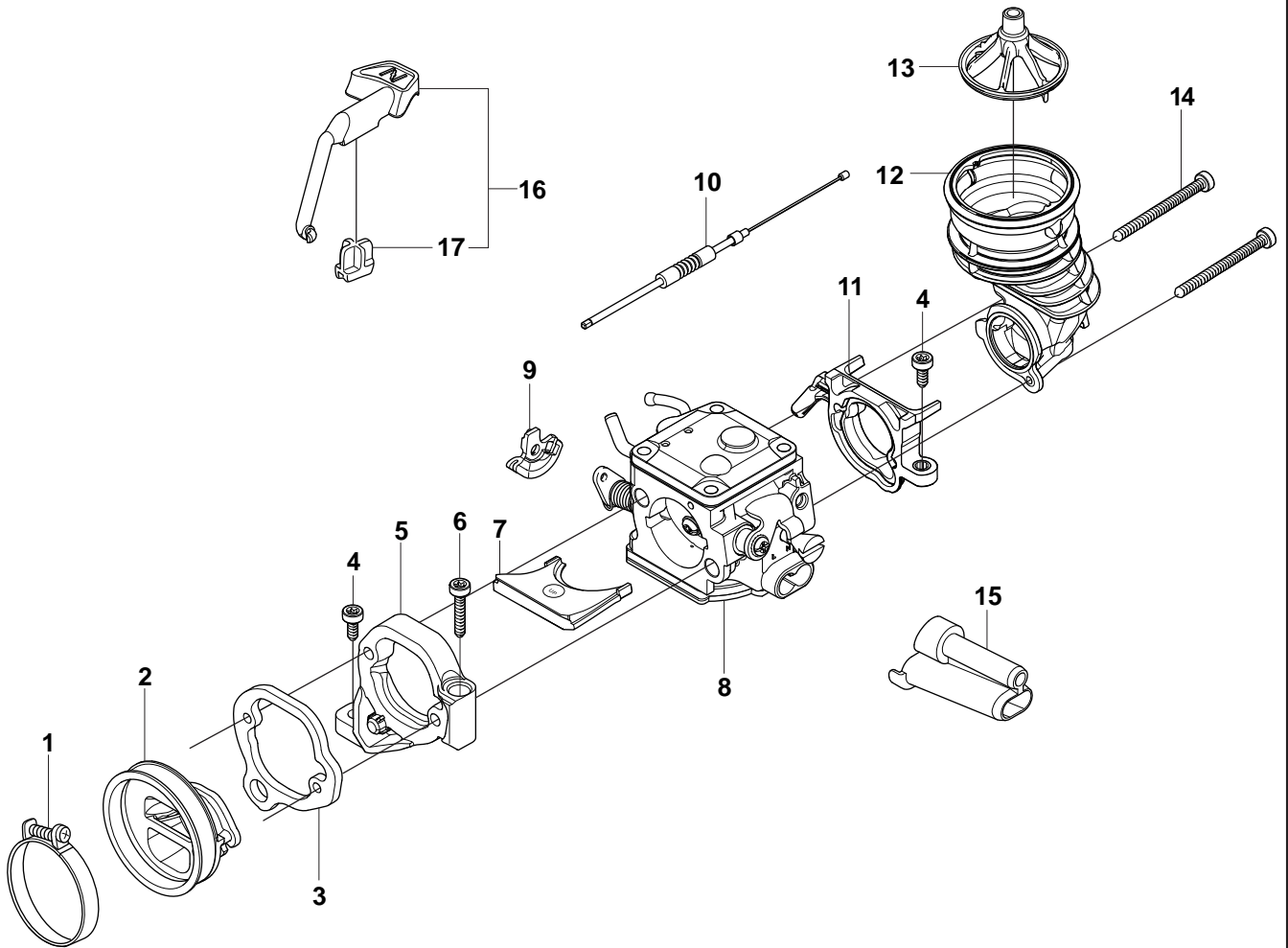


**Page K**  
**K970 Chain**

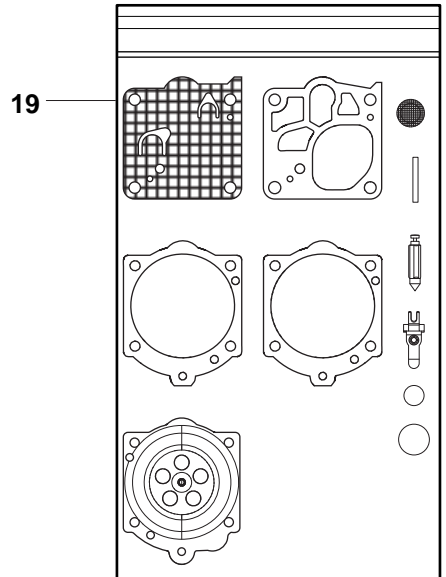
<b>Pos.</b>	<b>Part No.</b>	<b>Description</b>	<b>Quantity</b>	<b>Notes</b>	<b>New Part</b>
1	503 21 53-56	SCREW	2		
2	503 21 53-26	SCREW	2		
3	576 43 14-01	COVER	1		
4	729 52 89-71	SCREW	2		
5	578 06 53-01	SEALING	1		
6	576 73 80-01	FILTER COVER	1		
7	510 24 41-04	AIR FILTER	1		
8	576 42 69-03	CYLINDER COVER	1	Incl. 9 - 10	
9	525 61 70-04	SEALING	2	L=1,2 M. Cut to fit	
10	525 76 35-01	DECAL	1		
11	503 21 53-30	SCREW	2		
12	525 57 16-04	DECAL	1		



# K970 Chain



18



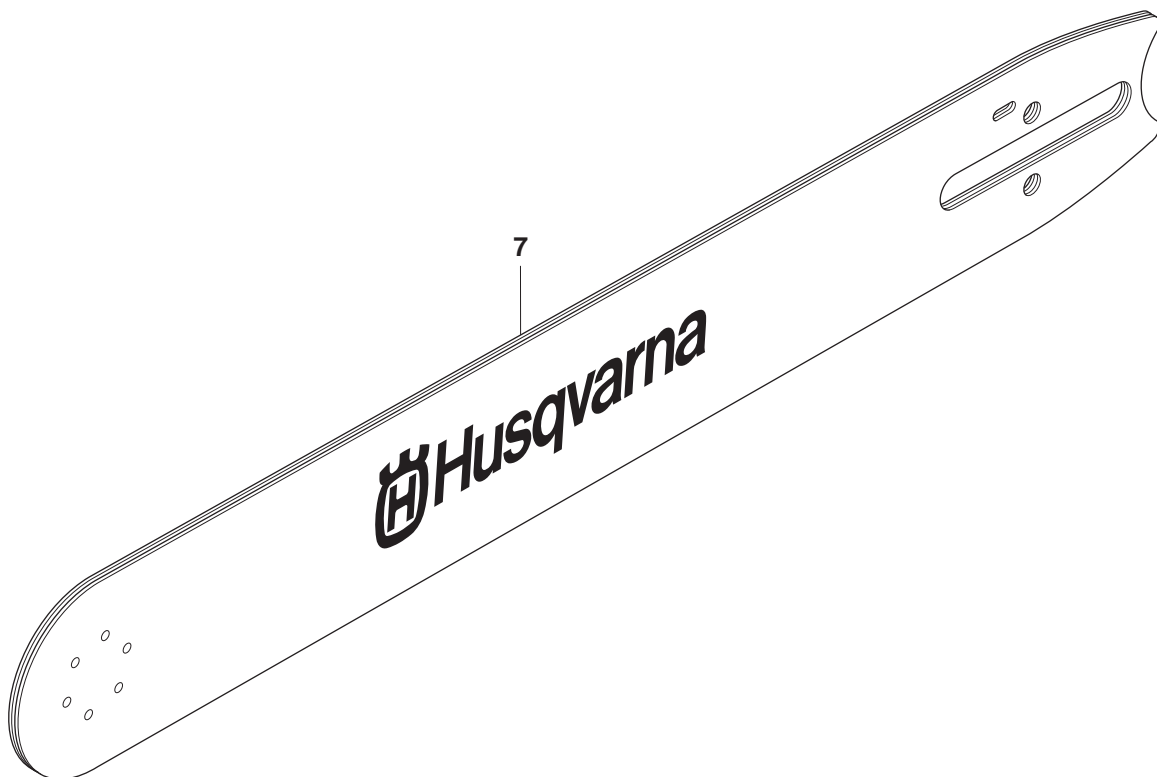
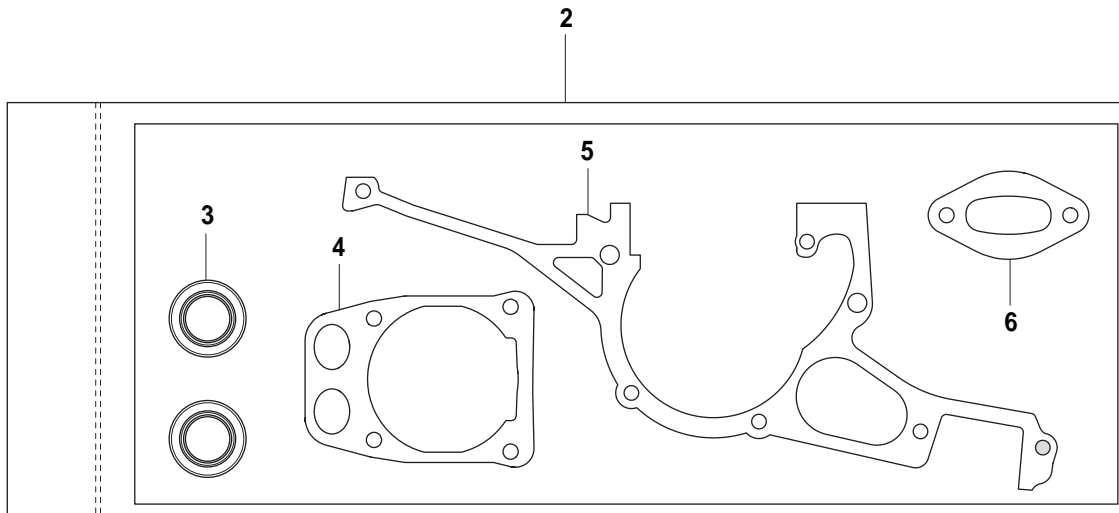
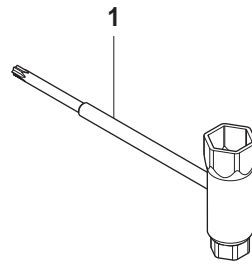
19



**Page L**  
**K970 Chain**

Pos.	Part No.	Description	Quantity	Notes	New Part
1	505 28 33-06	HOSE CLAMP	1		
2	506 41 41-01	INLET PIPE	1		
3	544 15 01-01	FLANGE	1		
4	503 21 53-16	SCREW	2		
5	544 11 39-01	CONSOLE	1		
6	503 21 53-30	SCREW	1		
7	506 41 42-01	PLATE	1		
8	522 94 20-01	CARBURETTOR	1	Walbro RWJ-5	
9	505 14 84-01	LEVER	1		
10	576 49 04-01	THROTTLE CABLE ASSY	1		
11	522 85 62-01	FLANGE INLET PIPE	1		
12	521 92 67-01	INLET PIPE	1		
13	510 24 39-01	FILTER CONNECTION	1		
14	501 97 18-01	SCREW	2		
15	544 23 26-01	CHISEL GUIDE	1		
16	506 23 20-11	CHOKE	1	Incl. 17	
17	506 27 25-01	WEAR PROTECTION	1		
18	502 44 58-01	GASKET KIT	1	Walbro RWJ-5	
19	502 44 59-01	REPAIR KIT	1	Walbro RWJ-5	

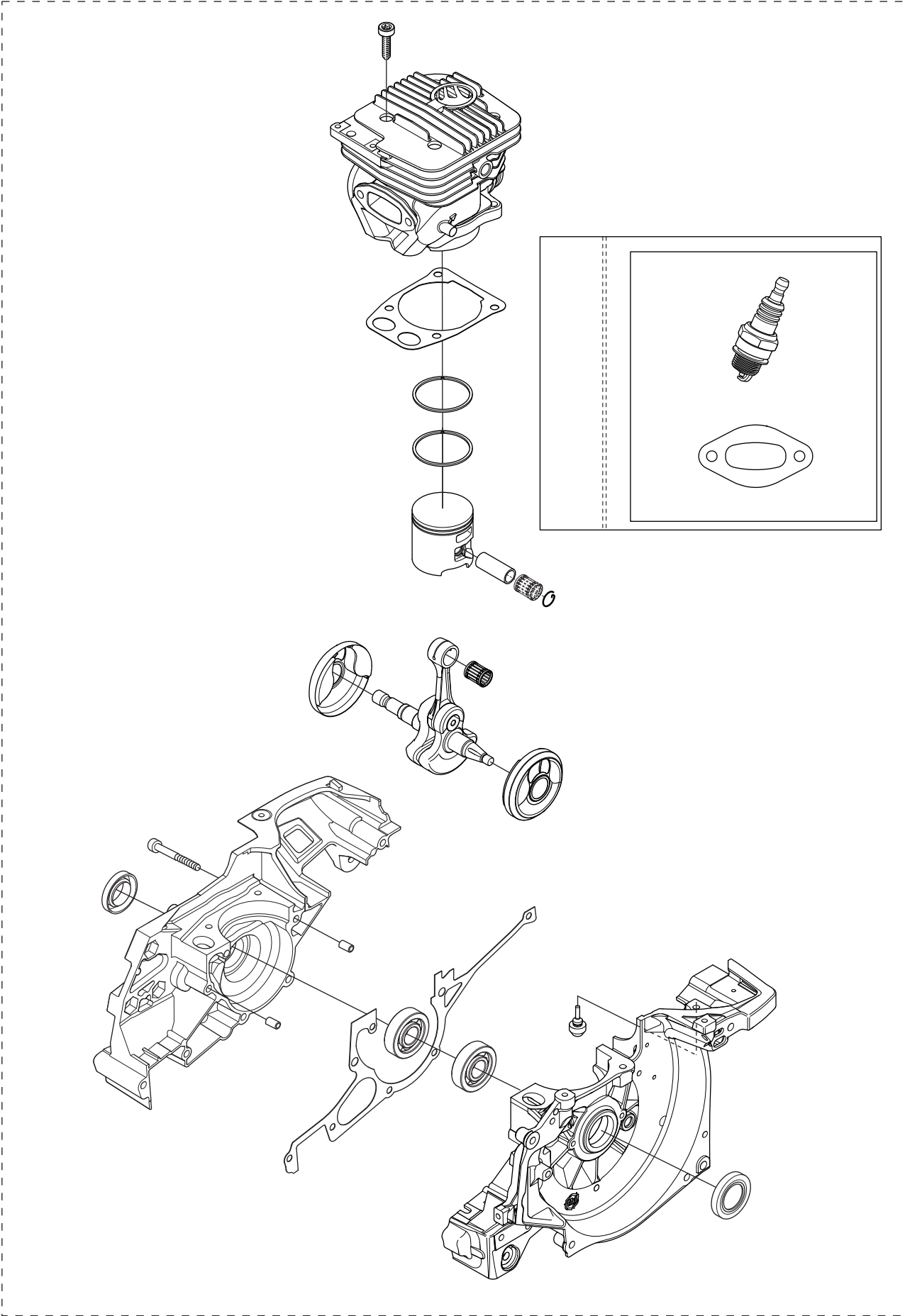
**M** K970 Chain  
Accessories  
Zubehöre  
Accessoires  
Acessorios  
Tillbehör



**Page M**  
**K970 Chain**

<b>Pos.</b>	<b>Part No.</b>	<b>Description</b>	<b>Quantity</b>	<b>Notes</b>	<b>New Part</b>
1	506 38 26-01	COMBINATION TOOL	1		
2	544 22 98-03	GASKET KIT	1	Incl. 3 - 6	
3	503 26 02-04	SEALING RING	2		
4	576 49 94-01	CYLINDER BASE GASKET	1		
5	506 41 39-04	GASKET	1		
6	506 37 81-01	GASKET MUFFLER	1		
7	506 34 62-02	BAR	1		

1



**Page N**  
**K970 Chain**

<b>Pos.</b>	<b>Part No.</b>	<b>Description</b>	<b>Quantity</b>	<b>Notes</b>	<b>New Part</b>
1	576 82 16-03	LONG BLOCK	1		